

BOBCAT COMPANY PRICE PAGES**NA Excavators****Please note the following when using Bobcat Price Pages:**

- All prices are shown in U.S. dollars.
- Check BobcatNET Pricing Homepage for current Canadian exchange rate.
- For current Dealer Installed Accessories pricing, reference BobQuote or Dealer Parts Department.
- Prices and specifications are subject to change without notice.

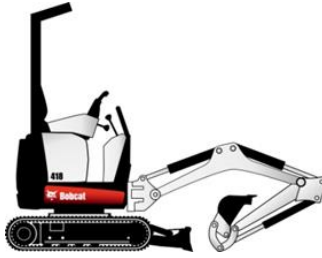
THE FOLLOWING UPDATES HAVE BEEN MADE TO THIS DOCUMENT:

Date	Description of Change
5/18/2020	Corrected item description on comfort package P07-C62 for the E35 Excavator
3/3/2020	Added E165
2/18/2020	Added Field Accessories to the E42R and E50R Machines
1/7/2020	Fixed formatting issues
1/1/2020	New year pricing
11/26/2019	E42 R2-Series added
11/26/2019	E50 R2-Series added
11/26/2019	E42 M-Series discontinued
11/26/2019	E50 M-Series discontinued
9/5/2019	E145 lineart added
7/31/2019	E145 attachment pricing updated
7/1/2019	Added E145
3/1/2019	E26 R-Series added
3/1/2019	E26 M-Series discontinued
8/14/2020	E60 R2-Series added

- *Certain Specification(s) are based on engineering calculations and are not actual measurements.
- *Specification(s) are provided for comparison purposes only and are subject to change without notice.
- *Specifications(s) for your individual Bobcat equipment will vary based on normal variations in desing, manufacturing, operating conditions, and other factors.

E10

Bobcat Compact Excavator



Standard Equipment

- | | |
|---|--|
| Adjustable Hydraulic Joystick Controls
Auxiliary Hydraulics –
- W/Boom Mounted Flush Face Quick Couplers
Operator Guard – Fold Down
- Includes: Retractable Seat Belt, Power Port
- Tip Over Protective Structure (TOPS)
Meets Requirements of ISO 12117-2: 2000
Control Console Locks
Control Pattern Selector Valve (ISO/STD) | Dozer Blade with Extensions
Horn
Hydraulically Retractable Undercarriage
Rubber Tracks
Spark Arrestor Muffler
2-Speed Travel
Work Light
Zero Tail Swing |
|---|--|

Quick Specs

	<u>E10</u>
Engine Model (Tier 4).....	D722
Horsepower.....	10.2
Auxiliary Hydraulics Flow.....	5.3 GPM
Travel Speed (Maximum).....	1.7 MPH
Operating Weight*.....	2,593 lbs.
Operator Guard Height.....	87"
Width.....	28" - 43.3"
Length, Transport.....	110"
Dig Depth.....	6'
Reach at Ground Level.....	10' 2"
Dump Height.....	6'
Arm Length.....	31.2"
Boom Swing (Left).....	70°
Boom Swing (Right).....	70°
Bucket Breakout Force.....	1865 lbf.
Arm Breakout Force.....	1248 lbf.
Tail Swing Overhang (UC Expanded).....	0.0"

*Operating Weight includes canopy, rubber tracks, applicable counterweight, standard bucket, fluids full and 165 lb. (75KG) operator.

Bobcat Compact Excavator

Part Number	Description	Compact Excavator
-------------	-------------	-------------------

M5545	E10 Compact Excavator.....	\$23,835
-------	----------------------------	----------

Part Number	Description	Dealer Installed Accessories - Order From Parts
-------------	-------------	---

To ensure having the correct Part Number for a Dealer Installed Accessory, obtain the excavator model and serial number and check with the Dealer Parts Department. For the most current Dealer Installed Accessories pricing, refer to BobQuote or Dealer Parts Department.

7164474	Beacon Kit.....	\$ _____
	Estimated Installation Time: 1 hrs.	
7160233	Boom Light Kit.....	\$ _____
	Estimated Installation Time: 2 hr.	
7160234	Boom Light housing Kit.....	\$ _____
	Estimated Installation Time: 2 hr.	
7160236	3" Seat Belt.....	\$ _____
7169091	Catalytic Exhaust Purifier Kit.....	\$ _____
6904762	Excavator Operator Safety DVD.....	\$ _____
	Includes both English and Spanish versions on one DVD	
6903186	Excavator Operator Training Kit.....	\$ _____
6900916	Excavator Service Safety Training Kit.....	\$ _____
7198922	Keyless Start Kit.....	\$ _____
	Provides provision for one Owner Code.	
7164475	Strobe Light Kit.....	\$ _____
7160235	Travel Motion Alarm Kit.....	\$ _____
	Estimated Installation Time: 2.0 hrs.	
6904762	Excavator Operator Safety DVD.....	\$ _____
	Includes both English and Spanish versions on one DVD	



Bobcat Compact Excavator



Standard Equipment

- | | |
|--|--|
| Auxiliary Hydraulics –
W/ Boom Mounted Flush Face Quick Couplers
Canopy
- Includes: Cup Holder, Retractable Seat Belt
- Roll Over Protective Structure (ROPS) –
Meets Requirements of ISO 12117-2: 2008
- Tip Over Protective Structure (TOPS) –
Meets Requirements of ISO 12117: 2000
- Falling Object Guard Structure (FOGS) –
Meets Requirements of ISO 10262
Control Console Locks | Control Pattern Selector Valve (ISO/STD)
Dozer Blade with Extensions
Engine/Hydraulic Monitor w/ Shutdown
Horn
Hydraulic Joystick Controls
Hydraulically Retractable Undercarriage
Rubber Tracks
Spark Arrestor Muffler
2-Speed Travel
Vandalism Protection
Work Light |
|--|--|

Quick Specs

	<u>E20</u>
Engine Model (Tier 4).....	D722
Horsepower.....	13.9
Auxiliary Hydraulics Flow.....	7.9 GPM
Travel Speed (Maximum).....	2.5 MPH
Operating Weight*.....	4306 lbs.
Shipping Weight.....	4231 lbs.
Operator Guard Height.....	90.4"
Width.....	38.6" - 53.5"
Length, Transport.....	145.2"
Dig Depth.....	8' 5"
Reach at Ground Level.....	14'
Dump Height.....	8' 10"
Arm Length.....	50.0"
Boom Swing (Left).....	80°
Boom Swing (Right).....	60°
Bucket Breakout Force.....	4684 lbf.
Arm Breakout Force.....	2086 lbf.
Tail Swing Overhang (UC Expanded).....	0.0"

*Operating Weight includes canopy, rubber tracks, applicable counterweight, standard bucket, fluids full and 165 lb. (75KG) operator.

Bobcat Compact Excavator

Part Number	Description	Compact Excavator
-------------	-------------	-------------------

M5519	E20 Compact Excavator Includes basic (foot pedal) auxiliary hydraulics and boom swing controls, manual 2-Speed travel.	\$31,961
-------	---	----------

Part Number	Description	Factory Installed Options
-------------	-------------	---------------------------

M5519-A02-C00	Basic Control Package..... Includes basic (foot pedal) auxiliary hydraulics and boom swing controls, manual-shift travel system.	N/C
M5519-A02-C01	Control Enhancement Package..... Includes fingertip auxiliary hydraulics & boom swing controls, and auto-shift travel system.	\$543
M5519-A02-C02	Cab Enclosure with Heat and Advanced Control Package..... Includes enclosed ROPS/TOPS cab with heater, fingertip auxiliary hydraulics & boom swing control, and auto-shift travel system (Control Enhancement Package). Increases operating weight by	\$4,109

Part Number	Description	Dealer Installed Accessories - Order From Sales
-------------	-------------	---

7387821	Laser Receiver, CR700..... Can be used as handheld, machine, or re-mounted laser receiver. Includes magnetic mount for machines and clamp for rod mount.	\$474
---------	---	-------

Part Number	Description	Dealer Installed Accessories - Order From Parts
-------------	-------------	---

To ensure having the correct Part Number for a Dealer Installed Accessory, obtain the excavator model and serial number and check with the Dealer Parts Department. For the most current Dealer Installed Accessories pricing, refer to BobQuote or Dealer Parts Department.

7265558	Beacon Kit, Cab..... Estimated Installation Time: 2. hrs.	\$ _____
7266592	Beacon Kit, Canopy..... Estimated Installation Time: 2. hrs.	\$ _____
7267667	Catalytic Exhaust Purifier..... Estimated Installation Time: 0.5 hr.	\$ _____
7259022	Engine Block Heater Kit..... Estimated Installation Time: 2. hrs.	\$ _____
6904762	Excavator Operator Safety DVD..... Includes both English and Spanish versions on one DVD	\$ _____
6903186	Excavator Operator Training Kit.....	\$ _____
6900916	Excavator Service Safety Training Kit.....	\$ _____
7256166	Guard Kit, Front..... Provides additional protection for operator (metal screen). Estimated Installation Time: 2.5 hrs.	\$ _____
7256171	Guard Kit, Top (FOPS) – for Cab only..... Provides additional operator protection from falling objects. Estimated Installation Time: 0.75 hr.	\$ _____
7261978	Keyless Start Kit..... Provides provision for one Owner Code. Please refer to Bobcat Parts (BASS) for piece part information. Estimated Installation Time: 1.0 hr.	\$ _____
7255948	Mirror Kit..... Estimated Installation Time: 0.5 hr.	\$ _____
7261784	Radio Kit (Cab Only)..... Please refer to Bobcat Parts Radio Guide for appropriate radio, harness and speaker requirements. Speaker & Antenna Kit (7266933) must be purchased in addition to the Radio Kit. Estimated Installation Time: 1.0 hr.	\$ _____

Bobcat Compact Excavator

Part Number	Description	Dealer Installed Accessories - Order From Parts
-------------	-------------	---

To ensure having the correct Part Number for a Dealer Installed Accessory, obtain the excavator model and serial number and check with the Dealer Parts Department. For the most current Dealer Installed Accessories pricing, refer to BobQuote or Dealer Parts Department.

7266933	Speaker & Antenna Kit (Cab Only).....	\$ _____
	Estimated Installation Time: 1. hr.	
6904762	Excavator Operator Safety DVD.....	\$ _____
	Includes both English and Spanish versions on one DVD	
7265557	Work Light Kit – Rear, Cab.....	\$ _____
	Additional rear work light (1), mount to rear corner of cab. Estimated Installation Time: 2 hrs.	
7266591	Work Light Kit – Rear, Canopy.....	\$ _____
	Additional rear work light (1), mount to rear corner of canopy. Estimated Installation Time: 2 hrs.	
7265559	Strobe Light Kit, Cab.....	\$ _____
	Estimated Installation Time: 0.75 hr.	
7266593	Strobe Light Kit, Canopy.....	\$ _____
	Estimated Installation Time: 0.75 hr.	
7259184	Travel Motion Alarm Kit.....	\$ _____
	Estimated Installation Time: 1.5 hrs.	
7259191	Work Light Kit – Front, Canopy.....	\$ _____
	Additional front work lights (2), mount to top front corners of canopy. Estimated Installation Time:	
7266591	Work Light Kit – Rear, Canopy.....	\$ _____
	Additional rear work light (1), mount to rear corner of canopy. Estimated Installation Time: 2 hrs.	
7265557	Work Light Kit – Rear, Cab.....	\$ _____
	Additional rear work light (1), mount to rear corner of cab. Estimated Installation Time: 2 hrs.	
7261981	Work Light Kit – Front, Cab.....	\$ _____
	Additional front work lights (2), mount to top front corners of cab. Estimated Installation Time: 2	

E26 R-Series

Bobcat Compact Excavator



Standard Equipment

- | | |
|---|--|
| Arm-Long with additional counterweight | Control Pattern Selector Valve (ISO/STD) |
| Auto-Idle | Dozer Blade with Float |
| Auxiliary Hydraulics – | Engine/Hydraulic Monitor with Shutdown |
| - W/ Boom Mounted Flush Face Quick Couplers | Fingertip Auxiliary Hydraulic Control |
| Boom Swing | Fingertip Boom Swing Control |
| Canopy | Horn |
| - Includes: Cup Holder, Retractable Seat Belt | Hydraulic Joystick Controls |
| - Roll Over Protective Structure (ROPS) – Meets Requirements of ISO 12117-2: 2008 | Minimal tail swing |
| - Tip Over Protective Structure (TOPS) – Meets Requirements of ISO 12117: 2000 | Rubber Tracks |
| - Falling Object Protective Structure (FOPS) - Meets Requirements of ISO 10262 | Spark Arrestor Muffler |
| Control Console Locks | Telematics - Machine IQ |
| | Vandalism Protection |
| | Work Lights |
| | X- Change™ Attachment Mounting System |

Quick Specs

	<u>E26</u>
	<u>Long Arm</u>
Engine Model (Tier 4).....	D1305
Horsepower.....	24.8
Auxiliary Hydraulics Flow.....	14.2 GPM
Travel Speed (Maximum).....	3.2 MPH
Operating Weight*.....	6489 lbs.
Shipping Weight.....	6324 lbs.
Cab Height.....	96"
Width.....	61"
Length, Transport.....	170"
Dig Depth.....	9' 6"
Reach at Ground Level.....	16'
Dump Height.....	10' 5"
Arm Length.....	55.1"
Boom Swing (Left).....	70°
Boom Swing (Right).....	55°
Bucket Breakout Force.....	5652 lbf.
Arm Breakout Force.....	3547 lbf.
Tail Swing Overhang.....	3.5"

*Operating Weight includes canopy, rubber tracks, applicable counterweight, standard bucket, fluids full and 165 lb. (75KG) operator.

E26 R-Series

Bobcat Compact Excavator

Part Number	Description	Compact Excavator
--------------------	--------------------	--------------------------

M5555	E26 T4 Bobcat Compact Excavator.....	\$38,873
M5555-A10-C52	Bobcat Telematics NA.....	\$0

Part Number	Description	Comfort Cab Packages
--------------------	--------------------	-----------------------------

MUST EITHER SELECT A BASE CONFIGURATION WITH NO OPTIONS OR ONE COMFORT AND ONE PERFORMANCE PACKAGE

M5555-P07-C11	C11 Comfort Package..... Includes Open Canopy, Travel Motion Alarm, and Vinyl Suspension Seat	\$534
M5555-P07-C21	C21 Comfort Package..... Includes Open Canopy, Deluxe Instrument Panel with Keyless Start, Travel Motion Alarm, and Vinyl Suspension Seat	\$1,092
M5555-P07-C41	C41 Comfort Package..... Includes Enclosed Cab with HVAC, Cloth Suspension Seat, and Travel Motion Alarm	\$6,733
M5555-P07-C51	C51 Comfort Package..... Includes Enclosed Cab with HVAC, Deluxe Instrument Panel with Keyless Start, Cloth Suspension Seat, and Travel Motion Alarm	\$7,291

Part Number	Description	Performance Cab Packages
--------------------	--------------------	---------------------------------

MUST EITHER SELECT A BASE CONFIGURATION WITH NO OPTIONS OR SELECT ONE COMFORT AND ONE PERFORMANCE PACKAGE OR SELECT ONE EXTENDABLE ARM PACKAGE, OR SELECT INDIVIDUAL OPTIONS

M5555-P06-P50	P50 Performance Package..... Includes Long Arm	\$0
M5555-P06-P60	P60 Performance Package..... Includes Long Arm and Hydraulic Clamp	\$1,946

Part Number	Description	Dealer Installed Accessories - Order From Sales
--------------------	--------------------	--

7387821	Laser Receiver, CR700..... Can be used as handheld, machine, or re-mounted laser receiver. Includes magnetic mount for machines and clamp for rod mount.	\$474
---------	---	-------

Part Number	Description	Dealer Installed Accessories - Order From Parts
--------------------	--------------------	--

To ensure having the correct Part Number for a Dealer Installed Accessory, obtain the excavator model and serial number and check with the Dealer Parts Department. For the most current Dealer Installed Accessories pricing, refer to BobQuote or Dealer Parts Department.

7102902	3" Seat Belt Kit..... Must also order installation instructions PN 6989413. Estimated Installation Time: 1.0 hrs.	\$ _____
7351339	Beacon Kit - Cab Estimated Installation Time: 2.0 hrs.	\$ _____
7351338	Beacon Kit - Canopy..... Estimated Installation Time: 2.0 hrs.	\$ _____
7352633	Case Drain..... Estimated Installation Time: __ hrs.	\$ _____

E20 R-Series

Bobcat Compact Excavator

Part Number	Description	Dealer Installed Accessories - Order From Parts
--------------------	--------------------	--

To ensure having the correct Part Number for a Dealer Installed Accessory, obtain the excavator model and serial number and check with the Dealer Parts Department. For the most current Dealer Installed Accessories pricing, refer to BobQuote or Dealer Parts Department.

7240592	Deluxe Display Panel Kit with Keyless Start..... Provides one owner code & eight user codes. Estimated Install Time: 1.0 hr.	\$ _____
6904762	Excavator Operator Safety DVD..... Includes both English and Spanish versions on one DVD	\$ _____
6903186	Excavator Operator Training Kit.....	\$ _____
6900916	Excavator Service Safety Training Kit.....	\$ _____
7352437	Fire Extinguisher Kit..... Estimated Installation Time: __ hrs.	\$ _____
7276698	Guard Kit , Front..... Provides additional operator protection. Estimated Installation Time: 1.5 hr.	\$ _____
7238484	Keyless Start Kit – For Standard Panel Machines..... Provides one Owner code and two User codes (five digit). Estimated Installation Time: 1.0 hr.	\$ _____
7173148	Mirror Kit..... Estimated Installation Time: 0.5 hr.	\$ _____
7261784	Radio Kit (Cab Only)..... Please refer to Bobcat Parts Radio Guide for appropriate radio, harness and speaker requirements. Speaker & Antenna Kit (7266933) must be purchased in addition to the Radio Kit. Estimated	\$ _____
7351321	Speaker & Antenna Kit - Cab..... Estimated Installation Time: __ hrs.	\$ _____
7352640	Second Auxiliary Hydraulics Kit..... Estimated Installation Time: 4.0 hrs.	\$ _____
7387487	Strobe Light Kit Cab..... Estimated Installation Time: __ hrs.	\$ _____
7387488	Strobe Light Kit Canopy..... Estimated Installation Time: __ hrs.	\$ _____
7351342	Travel Motion Alarm Kit..... Estimated Installation Time: __ hrs.	\$ _____
7372548	Work Lights Kit - LED Cab Front..... Additional front work lights (2). Estimated Installation Time __ hrs.	\$ _____
7351333	Work Lights Kit - LED Canopy Front..... Additional front work lights (2). Estimated Installation Time 2.0 hrs.	\$ _____
7351335	Work Lights Kit - LED Cab Rear..... Additional rear work light (1). Estimated Installation Time 2.0 hrs.	\$ _____
7351337	Work Lights Kit - LED Canopy Rear..... Additional rear work light (1). Estimated Installation Time 2.0 hrs.	\$ _____

E32 R-Series

Bobcat Compact Excavator



Standard Equipment

- | | |
|---|---|
| <ul style="list-style-type: none"> Auto-Idle Auto-Shift, 2-Speed Travel Auxiliary Hydraulics with Selectable Flow <ul style="list-style-type: none"> - W/ Boom Mounted Flush Face Quick Couplers Canopy <ul style="list-style-type: none"> - Includes: Cup Holder, Retractable Seat Belt, Suspension Seat - Roll Over Protective Structure (ROPS) – Meets Requirements of ISO 12117-2: 2008 - Tip Over Protective Structure (TOPS) – Meets Requirements of ISO 12117: 2000 - Falling Object Protective Structure (FOPS) – Meets Requirements of ISO 10262 Control Console Locks Control Pattern Selector Valve (ISO/STD) | <ul style="list-style-type: none"> Dozer Blade with Float Engine/Hydraulic Monitor with Shutdown Fingertip Auxiliary Hydraulic Control Fingertip Boom Swing Control Horn Hydraulic Joystick Controls Rubber Tracks Spark Arrestor Exhaust System Telematics Tier 4, Non DPF Vandalism Protection Work Lights X- Change™ Attachment Mounting System |
|---|---|

Quick Specs

	<u>Std Arm</u>	<u>Long Arm</u>	<u>Ext Arm</u>
	<u>E32</u>		
Engine Model (Tier 4).....	D1703	D1703	D1703
Horsepower.....	24.8	24.8	24.8
Rated Speed-RPM.....	2200	2200	2200
Auxiliary Hydraulics Flow.....	16.9 GPM	16.9 GPM	16.9 GPM
Travel Speed (Maximum).....	2.9 MPH	2.9 MPH	2.9 MPH
Operating Weight*.....	7340 lbs.	8203 lbs.	8434 lbs.
Shipping Weight.....	6952 lbs.	7815 lbs.	8046 lbs.
Cab Height.....	96.2"	96.2"	96.2"
Width.....	61"	61"	61"
Length, Transport.....	184"	188"	188"
Dig Depth.....	10' 3"	11' 3"	12' 11"
Reach at Ground Level.....	16' 4"	17' 4"	18' 11"
Dump Height.....	11' 0"	11' 7"	12' 6"
Arm Length.....	52.2"	64.0"	54.1"-84.3"
Boom Swing (Left).....	75°	75°	75°
Boom Swing (Right).....	55°	55°	55°
Bucket Breakout Force.....	6968 lbf.	6968 lbf.	6968 lbf.
Arm Breakout Force.....	4859 lbf.	3986 lbf.	4478 lbf.
Tail Swing Overhang.....	13.8"	17.3"	17.3"

*Operating Weight includes canopy, rubber tracks, applicable counterweight, standard bucket, fluids full and 165 lb. (75KG) operator.

E32 R-Series

Bobcat Compact Excavator

Part Number	Description	
--------------------	--------------------	--

M3309	E32 25HP Compact Excavator.....	\$46,170
M3309-R51-C03	Telematics, Canada.....	\$0
M3309-R51-C02	Telematics, US.....	\$0

Part Number	Description	
--------------------	--------------------	--

MUST EITHER SELECT A BASE CONFIGURATION WITH NO OPTIONS OR SELECT ONE COMFORT AND ONE PERFORMANCE PACKAGE OR SELECT ONE EXTENDABLE ARM PACKAGE, OR SELECT INDIVIDUAL OPTIONS

M3309-P07-C11	C11 Comfort Package..... Includes Open Canopy, Travel Motion Alarm, and Vinyl Suspension Seat.	\$310
M3309-P07-C21	C21 Comfort Package..... Includes Open Canopy, Deluxe Instrument Panel with Keyless Start, Travel Motion Alarm, and Vinyl Suspension Seat.	\$868
M3309-P07-C42	C42 Comfort Package..... Includes Enclosed Cab with HVAC, Cloth Suspension Seat, Travel Motion Alarm, and Radio	\$7,166
M3309-P07-C52	C52 Comfort Package..... Includes Enclosed Cab with HVAC, Deluxe Instrument Panel with Keyless Start, Cloth Suspension Seat, Travel Motion Alarm, and Radio	\$7,724
M3309-P07-C62	C62 Comfort Package..... Includes Enclosed Cab with Auto HVAC, Deluxe Instrument Panel with Keyless Start, Heated Cloth Suspension Seat, Travel Motion Alarm, and Radio	\$8,284

Part Number	Description	
--------------------	--------------------	--

MUST EITHER SELECT A BASE CONFIGURATION WITH NO OPTIONS OR SELECT ONE COMFORT AND ONE PERFORMANCE PACKAGE OR SELECT ONE EXTENDABLE ARM PACKAGE, OR SELECT INDIVIDUAL OPTIONS

M3309-P06-P10	P10 Performance Package Includes Short Arm	\$0
M3309-P06-P22	P22 Performance Package Includes Short Arm, Clamp, and Hydraulic X-Change	\$3,961
M3309-P06-P50	P50 Performance Package Includes Long Arm	\$1,683
M3309-P06-P60	P60 Performance Package Includes Long Arm and Clamp	\$3,772
M3309-P06-P63	P63 Performance Package Includes Long Arm, Clamp, Second Auxiliary Hydraulics, and Hydraulic X-Change	\$6,816

E32 R-Series

Bobcat Compact Excavator

Part Number	Description	Extendable Arm Packages
--------------------	--------------------	--------------------------------

MUST SELECT ONE EXTENABLE ARM PACKAGE CANNOT ADD COMFORT, PERFORMANCE, OR INDIVIDUAL OPTIONS

M3309-P08-E11	E11 Extendable Arm Package Includes Extendable Arm, Open Canopy, Travel Motion Alarm, and Vinyl Suspension Seat	\$5,103
M3309-P08-E25	E25 Extendable Arm Package Includes Extendable Arm, Open Canopy, Deluxe Instrument Panel with Keyless Start, Clamp, Hydraulic X-Change, Second Auxiliary Hydraulics, Travel Motion Alarm, and Vinyl Suspension Seat	\$13,718
M3309-P08-E42	E42 Extendable Arm Package Includes Extendable Arm, Enclosed Cab with HVAC, Cloth Suspension Seat, Travel Motion Alarm, and Radio	\$11,959
M3309-P08-E66	E66 Extendable Arm Package Includes Extendable Arm, Enclosed Cab with Auto HVAC, Deluxe Instrument Panel with Keyless Start, Cloth Suspension Heated Seat, Clamp, Hydraulic X-Change, Second Auxiliary Hydraulics, Travel Motion Alarm, and Radio	\$21,134

Part Number	Description	Individual Factory Options
--------------------	--------------------	-----------------------------------

CANNOT ADD TO ANY ORDER WITH COMFORT AND PERFORMANCE PACKAGE SELECTIONS OR EXTENDABLE ARM PACKAGE

NOTE: Individual Options SLP includes a 20% premium when compared to ordering the option in a package

M3309-R03-C02	Arm Option - Long Arm w/ Heavy Counterweight..... Increases operating weight by 863 lbs.	\$2,020
M3309-R03-C03	Arm Option - Extendable Arm w/ Heavy Counterweight..... Increases operating weight by 1094 lbs. Extendable Arm is not compatible with Pro Clamp	\$5,752
M3309-R08-C0_	Hydraulic Clamp (Class 3)..... Available for Standard Arm, Long Arm and Extendable Arm. Second Auxiliary Hydraulics will be automatically added when ordering both the Hydraulic Clamp and Extendable Arm from the factory. Increases operating weight by 126 lb.	\$2,508
M3309-R06-C0_	Hydraulic X-Change..... Available for Standard Arm, Long Arm and Extendable Arm. Second Auxiliary Hydraulics (M3309-R07-C03) are automatically included/added to machine configuration if adding Clamp to Extendable arm machine.	\$2,246
M3309-R26-C02	Radio (Not available with canopy).....	\$520
M3309-R01-C03	Enclosed Cab with HVAC..... Includes Cloth Suspension Seat	\$7,708
M3309-R01-C04	Enclosed Cab with Auto HVAC..... Includes Cloth Heated Suspension Seat	\$8,380
M3309-R14-C02	Deluxe Instrument Panel with Keyless Start for Canopy.....	\$670
M3309-R14-C04	Deluxe Instrument Panel with Keyless Start for Cab.....	\$670
M3309-R07-C02	Second Auxiliary Hydraulics – Standard Arm / Long Arm	\$1,406
M3309-R07-C03	Second Auxiliary Hydraulics – Extendable Arm..... Note: Second Auxiliaries are automatically included on Extendable Arm/Clamp optioned machines.	\$1,406
M3309-R02-C02	Steel Tracks..... Increases operating weight by 212 lbs.	\$3,118
M3309-R11-C02	Travel Motion Alarm.....	\$372

****NOTE:** When adding a Clamp to an Extendable Arm Option, the Second Auxiliary Hydraulics option will automatically be added to the configuration. If adding field installed Clamp kit to an Extendable Arm machine, it is recommended that Second Auxiliary option be added to the machine. Pro Clamp™ is NOT compatible with Extendable Arm.

R-Series

Bobcat Compact Excavator

Part Number	Description	Dealer Installed Accessories - Order From Sales
-------------	-------------	---

7387821	Laser Receiver, CR700..... Can be used as handheld, machine, or re-mounted laser receiver. Includes magnetic mount for machines and clamp for rod mount.	\$474
7160486	Laser Receiver, BLR2 (For use with Depth Check)..... For use with Depth Check. Mounting Kit (7246898) must also be purchased from Parts. Estimated Installation Time: 0.25 hrs.	\$2,099
7275232	Laser Transmitter Beacon, GL422N - (For use with Depth Check)..... Dual Slope. Includes CR700 Receiver.	\$2,679
6688806	Tripod for Laser Transmitter Beacon	\$268
7178040	Long Arm Kit..... Shipping Weight – 186 lbs. Estimated Installation Time 3 hrs. (Add-On Counterweight 7286769 required when converting Std Arm to Long Arm or Extendable Arm).	\$955

Part Number	Description	Dealer Installed Accessories - Order From Parts
-------------	-------------	---

To ensure having the correct Part Number for a Dealer Installed Accessory, obtain the excavator model and serial number and check with the Dealer Parts Department. For the most current Dealer Installed Accessories pricing, refer to BobQuote or Dealer Parts Department.

7245104	Auxiliary Coupler Block Kit, Fixed arm..... Includes Push-to-Release coupler block and case drain. Estimated Installation Time: 3 hrs.	\$ _____
7245105	Auxiliary Coupler Block Kit, Extendable Arm..... Includes Push-to-Release coupler block and case drain. Estimated Installation Time: 3 hrs.	\$ _____
7172554	Beacon Kit..... Estimated Installation Time: 1 hr.	\$ _____
7245617	Case Drain Kit..... For use with Flail Mower. Estimated Installation Time: 1.5 hrs.	\$ _____
7241562	Catalytic Exhaust Purifier..... Estimated Installation Time: 1 hr.	\$ _____
7286769	Counterweight, Add-On Kit (R - Series Machines Only)..... Can be added to standard arm machine if converting to LA/EA, or to increase Std Arm lift stability. Weight = 642 lbs. Estimated Installation Time: 1 hr.	\$ _____
7203767	Deflector, Louver..... Provides additional protection of engine components and deflects air flow exiting below engine. Must also order Bolt PN 29CM1016 qty (4) and Installation Instructions PN 6990164. Estimated installation time for Extendable Arm: 4 hrs.	\$ _____
7240592	Deluxe Display Panel Kit with Keyless Start..... Provides one owner code & eight user codes. Estimated Install Time: 1.0 hr.	\$ _____
7246893	Depth Check Kit, Long Arm..... Excavator must be equipped with Deluxe Panel. Estimated Installation Time: 3 hrs.	\$ _____
7246895	Depth Check Kit, Standard Arm..... Excavator must be equipped with Deluxe Panel. Estimated Installation Time: 3 hrs.	\$ _____
7246898	Depth Check BLR2 Laser Mounting Kit..... Required if using BLR2 with Depth Check. Includes Magnetic Receiver Mount and Harness. (Referr to "Order From Sales" for BLR2)	\$ _____
7238275	Direct-to-Tank Kit..... Reduces back pressure on auxiliary return line. Estimated Installation Time: 1.5 hrs.	\$ _____
7188091	Engine Block Heater Kit..... Estimated Installation Time: 1 hr.	\$ _____

R-Series

Bobcat Compact Excavator

Part Number	Description	Dealer Installed Accessories - Order From Parts
-------------	-------------	---

To ensure having the correct Part Number for a Dealer Installed Accessory, obtain the excavator model and serial number and check with the Dealer Parts Department. For the most current Dealer Installed Accessories pricing, refer to BobQuote or Dealer Parts Department.

6904762	Excavator Operator Safety DVD.....	\$ _____
	Includes both English and Spanish versions on one DVD	
6903186	Excavator Operator Training Kit.....	\$ _____
6900916	Excavator Service Safety Training Kit.....	\$ _____
7202870	Extendable Arm Kit.....	\$ _____
	If installing on standard arm, must also install Counterweight Add-On Kit PN 7286769. Estimated installation time for Extendable Arm: 4 hrs.	
7306976	Fire Extinguisher Kit.....	\$ _____
	Estimated Installation Time: 1 hr.	
7320485	Guard Kit, Front.....	\$ _____
	Front guard (metal screen) attaches to cab or canopy to provide additional operator protection. Estimated Installation Time: 1.5 hr.	
7227740	Grading Blade Accessory – Class 3.....	\$ _____
	24" Grading Blade accessory for use with Pro Clamp System. Estimated Installation Time: 0.25 hr.	
7178042	Hydraulic X-Change Kit – Standard Arm & Long Arm.....	\$ _____
	Estimated Installation Time: 6 hrs.	
7203210	Hydraulic X-Change Kit – Extendable Arm.....	\$ _____
	Estimated Installation Time: 6 hrs.	
7238484	Keyless Start Kit – For Standard Panel Machines.....	\$ _____
	Provides one Owner code and two User codes (five digit). Estimated Installation Time: 1.0 hr.	
7236891	Lift Point Accessory.....	\$ _____
	Must also order bolt PN 7CM835 quantity (4) and nut PN 51DM8 quantity (4) NOT compatible with Extendable Arm. Estimated Installation Time:0.5 hrs.	
7173148	Mirror Kit.....	\$ _____
	Estimated Installation Time: 0.5 hr.	
6988434	Radio Kit – Cab only.....	\$ _____
	Must also order speaker & antenna kit PN 7228595 if not already installed. Estimated Installation Time: 1.0 hr.	
7228595	Speaker & Antenna Kit (Cab machine only).....	\$ _____
	Estimated Installation Time: 1.0 hr.	
7010428	3" Seat Belt.....	\$ _____
	Must also order installation instructions PN 6989413. Estimated Installation Time: 1.0 hrs.	
7330192	Secondary Auxiliary Hydraulics Kit (R-Series only).....	\$ _____
	Provides 5.4 GPM maximum flow. Estimated Installation Time: 4 hrs.	
7174550	Steel Track Bolt-On Rubber Pad Kit.....	\$ _____
	Rubber pads bolt to steel track (82 pads). Estimated Installation Time: 2 hrs.	
7172974	Strobe Light Kit.....	\$ _____
	Estimated Installation Time: 0.75 hr.	
7183650	Travel Motion Alarm Kit	\$ _____
	Estimated Installation Time: 2.0 hrs.	
7280215	Window Shade Kit (R-Series only).....	\$ _____
	Retractable window shade, covers top cab window. Estimated Installation Time: 2 hrs.	
7241225	Work Lights Kit-Cab.....	\$ _____
	Additional front work lights (2), and rear work light (1). Mounts to front & rear cab pillars. Estimated Installation Time: 2 hrs.	
7241226	Work Lights Kit- Canopy.....	\$ _____
	Additional front work lights (2), and rear work light (1). Mounts to front & rear cab pillars. Estimated Installation Time: 2 hrs.	

E35 R-Series

Bobcat Compact Excavator



Standard Equipment

- | | |
|--|--|
| Auto-Idle | Dozer Blade with Float |
| Auto-Shift, 2-Speed Travel | Engine/Hydraulic Monitor with Shutdown |
| Auxiliary Hydraulics with Selectable Flow | Fingertip Auxiliary Hydraulic Control |
| - W/ Boom Mounted Flush Face Quick Couplers | Fingertip Boom Swing Control |
| Canopy | Horn |
| - Includes: Cup Holder, Retractable Seat Belt, Suspension Seat | Hydraulic Joystick Controls |
| - Roll Over Protective Structure (ROPS) – Meets | Rubber Tracks |
| - Requirements of ISO 12117-2: 2008 | Spark Arrestor Exhaust System |
| - Tip Over Protective Structure (TOPS) – Meets | Telematics |
| - Requirements of ISO 12117: 2000 | Tier 4, Non DPF |
| - Falling Object Protective Structure (FOPS) – Meets | Vandalism Protection |
| - Requirements of ISO 10262 | Work Lights |
| Control Console Locks | X- Change™ Attachment Mounting System |
| Control Pattern Selector Valve (ISO/STD) | Zero Tail Swing |

Quick Specs

	E35 - 25HP			E35 - 33HP		
	<u>Std Arm</u>	<u>Long Arm</u>	<u>Ext Arm</u>	<u>Std Arm</u>	<u>Long Arm</u>	<u>Ext Arm</u>
Engine Model (Tier 4).....	D1703	D1703	D1703	Bobcat 1.8L	Bobcat 1.8L	Bobcat 1.8L
Horsepower.....	24.8	24.8	24.8	33.5	33.5	33.5
Rated Speed-RPM.....	2200	2200	2200	2400	2400	2400
Auxiliary Hydraulics Flow.....	16.9 GPM	16.9 GPM	16.9 GPM	16.9 GPM	16.9 GPM	16.9 GPM
Travel Speed (Maximum).....	2.9 MPH	2.9 MPH	2.9 MPH	2.9 MPH	2.9 MPH	2.9 MPH
Operating Weight*.....	7699 lbs.	8377 lbs.	8597 lbs.	7909 lbs.	8587 lbs.	8807 lbs.
Shipping Weight.....	7311 lbs.	7989 lbs.	8209 lbs.	7521 lbs.	8199 lbs.	8419 lbs.
Cab Height.....	96.2"	96.2"	96.2"	96.2"	96.2"	96.2"
Width.....	69"	69.0"	69.0"	69.0"	69.0"	69.0"
Length, Transport.....	190"	190"	191"	190"	190"	191"
Dig Depth.....	10' 3"	11' 3"	12' 11"	10' 3"	11' 3"	12' 11"
Reach at Ground Level.....	17' 2"	18' 11"	19' 9"	17' 2"	18' 11"	19' 9"
Dump Height.....	11'	11' 7"	12' 6"	11'	11' 7"	12' 6"
Arm Length.....	52.2"	64.0"	54.1"-84.3"	52.2"	64.0"	54.1"-84.3"
Boom Swing (Left).....	75°	75°	75°	75°	75°	75°
Boom Swing (Right).....	55°	55°	55°	55°	55°	55°
Bucket Breakout Force.....	6968 lbf.	6968 lbf.	6968 lbf.	6968 lbf.	6968 lbf.	6968 lbf.
Arm Breakout Force.....	4859 lbf.	3986 lbf.	4478 lbf.	4859 lbf.	3986 lbf.	4478 lbf.
Tail Swing Overhang.....	0.0"	3.5"	3.5"	0.0"	3.5"	3.5"

*Operating Weight includes canopy, rubber tracks, applicable counterweight, standard bucket, fluids full and 165 lb. (75KG) operator.

E35 R-Series

Bobcat Compact Excavator

Part Number	Description	Compact Excavator
-------------	-------------	-------------------

M3311	E35 – 25 HP Compact Excavator	\$48,051
M3307	E35 – 33 HP Compact Excavator	\$54,666
M33__-R51-C03	Telematics, Canada.....	\$0
M33__-R51-C02	Telematics, US.....	\$0

Part Number	Description	Comfort Cab Packages
-------------	-------------	----------------------

MUST EITHER SELECT A BASE CONFIGURATION WITH NO OPTIONS OR SELECT ONE COMFORT AND ONE PERFORMANCE PACKAGE OR SELECT ONE EXTENDABLE ARM PACKAGE, OR SELECT INDIVIDUAL OPTIONS

M33__-P07-C11	C11 Comfort Package..... Includes Open Canopy, Travel Motion Alarm, and Vinyl Suspension Seat.	\$310
M33__-P07-C21	C21 Comfort Package..... Includes Open Canopy, Deluxe Instrument Panel with Keyless Start, Travel Motion Alarm, and Vinyl Suspension Seat.	\$868
M33__-P07-C42	C42 Comfort Package..... Includes Enclosed Cab with HVAC, Cloth Suspension Seat, Travel Motion Alarm, and Radio	\$7,166
M33__-P07-C52	C52 Comfort Package..... Includes Enclosed Cab with HVAC, Deluxe Instrument Panel with Keyless Start, Cloth Suspension Seat, Travel Motion Alarm, and Radio	\$7,724
M33__-P07-C62	C62 Comfort Package..... Includes Enclosed Cab with Auto HVAC, Deluxe Instrument Panel with Keyless Start, Heated Cloth Suspension Seat, Travel Motion Alarm, and Radio	\$8,284

Part Number	Description	Performance Cab Packages
-------------	-------------	--------------------------

MUST EITHER SELECT A BASE CONFIGURATION WITH NO OPTIONS OR SELECT ONE COMFORT AND ONE PERFORMANCE PACKAGE OR SELECT ONE EXTENDABLE ARM PACKAGE, OR SELECT INDIVIDUAL OPTIONS

M33__-P06-P10	P10 Performance Package	\$0
	Includes Short Arm	
M33__-P06-P22	P22 Performance Package	\$3,961
	Includes Short Arm, Clamp, and Hydraulic X-Change	
M33__-P06-P50	P50 Performance Package	\$1,683
	Includes Long Arm	
M33__-P06-P60	P60 Performance Package	\$3,772
	Includes Long Arm and Clamp	
M33__-P06-P63	P63 Performance Package	\$6,816
	Includes Long Arm, Clamp, Second Auxiliary Hydraulics, and Hydraulic X-Change	
M33__-P06-P70	P70 Performance Package	\$4,605
	Includes Long Arm and Angle Blade	
M33__-P06-P83	P83 Performance Package	\$9,739
	Includes Long Arm, Angle Blade, Clamp, Second Auxiliary Hydraulics, and Hydraulic X-Change	

E35 R-Series

Bobcat Compact Excavator

Part Number	Description	Extendable Arm Packages
-------------	-------------	-------------------------

MUST SELECT ONE EXTENABLE ARM PACKAGE CANNOT ADD COMFORT, PERFORMANCE, OR INDIVIDUAL OPTIONS

M33__-P08-E11	E11 Extendable Arm Package	\$5,103
	Includes Extendable Arm, Open Canopy, Travel Motion Alarm, and Vinyl Suspension Seat	
M33__-P08-E25	E25 Extendable Arm Package	\$13,718
	Includes Extendable Arm, Open Canopy, Deluxe Instrument Panel with Keyless Start, Clamp, Hydraulic X-Change, Second Auxiliary Hydraulics, Angle Blade, Travel Motion Alarm, and Vinyl Suspension Seat	
M33__-P08-E42	E42 Extendable Arm Package	\$11,959
	Includes Extendable Arm, Enclosed Cab with HVAC, Cloth Suspension Seat, Travel Motion Alarm, and Radio	
M33__-P08-E66	E66 Extendable Arm Package	\$21,134
	Includes Extendable Arm, Enclosed Cab with Auto HVAC, Deluxe Instrument Panel with Keyless Start, Cloth Suspension Heated Seat, Clamp, Hydraulic X-Change, Second Auxiliary Hydraulics, Angle Blade, Travel Motion Alarm, and Radio	

Part Number	Description	Individual Factory Options
-------------	-------------	----------------------------

CANNOT ADD TO ANY ORDER WITH COMFORT AND PERFORMANCE PACKAGE SELECTIONS OR EXTENDABLE ARM PACKAGE

NOTE: Individual Options SLP includes a 20% premium when compared to ordering the option in a package

M33__-R03-C02	Arm Option - Long Arm w/ Heavy Counterweight.....	\$2,020
	Increases operating weight by 863 lbs.	
M33__-R03-C03	Arm Option - Extendable Arm w/ Heavy Counterweight.....	\$5,752
	Increases operating weight by 1094 lbs. Extendable Arm is not compatible with Pro Clamp	
M33__-R08-C0_	Hydraulic Clamp (Class 3).....	\$2,508
	Available for Standard Arm, Long Arm and Extendable Arm. Second Auxiliary Hydraulics will be automatically added when ordering both the Hydraulic Clamp and Extendable Arm from the factory. Increases operating weight by 126 lb.	
M33__-R06-C0_	Hydraulic X-Change.....	\$2,246
	Available for Standard Arm, Long Arm and Extendable Arm. Second Auxiliary Hydraulics (M3309-R07-C03) are automatically included/added to machine configuration if adding Clamp to Extendable arm machine.	
M33__-R26-C02	Radio (Not available with canopy).....	\$520
M33__-R01-C03	Enclosed Cab with HVAC.....	\$7,708
	Includes Cloth Suspension Seat	
M33__-R01-C04	Enclosed Cab with Auto HVAC.....	\$8,380
	Includes Cloth Heated Suspension Seat	
M33__-R14-C02	Deluxe Instrument Panel with Keyless Start for Canopy.....	\$670
M33__-R14-C04	Deluxe Instrument Panel with Keyless Start for Cab.....	\$670
M33__-R07-C02	Second Auxiliary Hydraulics – Standard Arm / Long Arm	\$1,406
M33__-R07-C03	Second Auxiliary Hydraulics – Extendable Arm.....	\$1,406
	Note: Second Auxiliaries are automatically included on Extendable Arm/Clamp optioned machines.	
M33__-R02-C02	Steel Tracks.....	\$3,118
	Increases operating weight by 212 lbs.	
M33__-R11-C02	Travel Motion Alarm.....	\$372
M33__-R12-C02	Hydraulic Angle Blade.....	\$3,508

****NOTE:** When adding a Clamp to an Extendable Arm Option, the Second Auxiliary Hydraulics option will automatically be added to the configuration. If adding field installed Clamp kit to an Extendable Arm machine, it is recommended that Second Auxiliary option be added to the machine. Pro Clamp™ is NOT compatible with Extendable Arm.

R-Series

Bobcat Compact Excavator

Dealer Installed Accessories - Order From Sales	
Part Number	Description
7387821	Laser Receiver, CR700..... \$474 Can be used as handheld, machine, or re-mounted laser receiver. Includes magnetic mount for machines and clamp for rod mount.
7160486	Laser Receiver, BLR2 (For use with Depth Check)..... \$2,099 For use with Depth Check. Mounting Kit (7246898) must also be purchased from Parts. Estimated Installation Time: 0.25 hrs.
7275232	Laser Transmitter Beacon, GL422N - (For use with Depth Check)..... \$2,679 Dual Slope. Includes CR700 Receiver.
6688806	Tripod for Laser Transmitter Beacon \$268 For use with GL422N laser transmitter.
7178040	Long Arm Kit..... \$955 Shipping Weight – 186 lbs. Estimated Installation Time 3 hrs. (Add-On Counterweight 7286769 required when converting Std Arm to Long Arm or Extendable Arm).

Dealer Installed Accessories - Order From Parts	
Part Number	Description
<i>To ensure having the correct Part Number for a Dealer Installed Accessory, obtain the excavator model and serial number and check with the Dealer Parts Department. For the most current Dealer Installed Accessories pricing, refer to BobQuote or Dealer Parts Department.</i>	
7245104	Auxiliary Coupler Block Kit, Fixed arm..... \$ _____ Includes Push-to-Release coupler block and case drain. Estimated Installation Time: 3 hrs.
7245105	Auxiliary Coupler Block Kit, Extendable Arm..... \$ _____ Includes Push-to-Release coupler block and case drain. Estimated Installation Time: 3 hrs.
7172554	Beacon Kit..... \$ _____ Estimated Installation Time: 1 hr.
7245617	Case Drain Kit..... \$ _____ For use with Flail Mower. Estimated Installation Time: 1.5 hrs.
7241562	Catalytic Exhaust Purifier..... \$ _____ Estimated Installation Time: 1 hr.
7286769	Counterweight, Add-On Kit (R - Series Machines Only)..... \$ _____ Can be added to standard arm machine if converting to LA/EA, or to increase Std Arm lift stability. Weight = 642 lbs. Estimated Installation Time: 1 hr.
7203767	Deflector, Louver..... \$ _____ Provides additional protection of engine components and deflects air flow exiting below engine. Must also order Bolt PN 29CM1016 qty (4) and Installation Instructions PN 6990164. Estimated installation time for Extendable Arm: 4 hrs.
7240592	Deluxe Display Panel Kit with Keyless Start..... \$ _____ Provides one owner code & eight user codes. Estimated Install Time: 1.0 hr.
7246892	Depth Check Kit, Long Arm And Angle blade..... \$ _____ Excavator must be equipped with Deluxe Panel. Estimated Installation Time: 3 hrs.
7246893	Depth Check Kit, Long Arm..... \$ _____ Excavator must be equipped with Deluxe Panel. Estimated Installation Time: 3 hrs.
7246894	Depth Check Kit, Standard Arm and Angle Blade..... \$ _____ Excavator must be equipped with Deluxe Panel. Estimated Installation Time: 3 hrs.
7246895	Depth Check Kit, Standard Arm..... \$ _____ Excavator must be equipped with Deluxe Panel. Estimated Installation Time: 3 hrs.
7246898	Depth Check BLR2 Laser Mounting Kit..... \$ _____ Required if using BLR2 with Depth Check. Includes Magnetic Receiver Mount and Harness.
7238275	Direct-to-Tank Kit..... \$ _____ Reduces back pressure on auxiliary return line. Estimated Installation Time: 1.5 hrs.
7188091	Engine Block Heater Kit..... \$ _____ Estimated Installation Time: 1 hr.

E35 R-Series

Bobcat Compact Excavator

Part Number	Description	Dealer Installed Accessories - Order From Parts
-------------	-------------	---

To ensure having the correct Part Number for a Dealer Installed Accessory, obtain the excavator model and serial number and check with the Dealer Parts Department. For the most current Dealer Installed Accessories pricing, refer to BobQuote or Dealer Parts Department.

7320030	Engine Block Heater Kit – 33 HP Only.....	\$ _____
	Estimated Installation Time: 0.25 hr.	
6904762	Excavator Operator Safety DVD.....	\$ _____
	Includes both English and Spanish versions on one DVD	
6903186	Excavator Operator Training Kit.....	\$ _____
6900916	Excavator Service Safety Training Kit.....	\$ _____
7202870	Extendable Arm Kit.....	\$ _____
	If installing on standard arm, must also install Counterweight Add-On Kit PN 7286769. Estimated installation time for Extendable Arm: 4 hrs.	
7306976	Fire Extinguisher Kit.....	\$ _____
	Estimated Installation Time: 1 hr.	
7320485	Guard Kit, Front.....	\$ _____
	Front guard (metal screen) attaches to cab or canopy to provide additional operator protection. Estimated Installation Time: 1.5 hr.	
7227740	Grading Blade Accessory – Class 3.....	\$ _____
	24" Grading Blade accessory for use with Pro Clamp System. Estimated Installation Time: 0.25 hr.	
7178042	Hydraulic X-Change Kit – Standard Arm & Long Arm.....	\$ _____
	Estimated Installation Time: 6 hrs.	
7203210	Hydraulic X-Change Kit – Extendable Arm.....	\$ _____
	Estimated Installation Time: 6 hrs.	
7238484	Keyless Start Kit – For Standard Panel Machines.....	\$ _____
	Provides one Owner code and two User codes (five digit). Estimated Installation Time: 1.0 hr.	
7236891	Lift Point Accessory.....	\$ _____
	Must also order bolt PN 7CM835 quantity (4) and nut PN 51DM8 quantity (4) NOT compatible with Extendable Arm. Estimated Installation Time:0.5 hrs.	
7173148	Mirror Kit.....	\$ _____
	Estimated Installation Time: 0.5 hr.	
6988434	Radio Kit – Cab only.....	\$ _____
	Must also order speaker & antenna kit PN 7228595 if not already installed. Estimated Installation Time: 1.0 hr.	
7228595	Speaker & Antenna Kit (Cab machine only).....	\$ _____
	Estimated Installation Time: 1.0 hr.	
7010428	3" Seat Belt.....	\$ _____
	Must also order installation instructions PN 6989413. Estimated Installation Time: 1.0 hrs.	
7330192	Secondary Auxiliary Hydraulics Kit (R-Series only).....	\$ _____
	Provides 5.4 GPM maximum flow. Estimated Installation Time: 4 hrs.	
7174552	Steel Track Bolt-On Rubber Pad Kit - E35.....	\$ _____
	Rubber pads bolt to steel track (86 pads). Estimated Installation Time: 2 hrs.	
7172974	Strobe Light Kit.....	\$ _____
	Estimated Installation Time: 0.75 hr.	
7183650	Travel Motion Alarm Kit	\$ _____
	Estimated Installation Time: 2.0 hrs.	
7280215	Window Shade Kit (R-Series only).....	\$ _____
	Retractable window shade, covers top cab window. Estimated Installation Time: 2 hrs.	
7241225	Work Lights Kit-Cab.....	\$ _____
	Additional front work lights (2), and rear work light (1). Mounts to front & rear cab pillars. Estimated Installation Time: 2 hrs.	
7241226	Work Lights Kit- Canopy.....	\$ _____
	Additional front work lights (2), and rear work light (1). Mounts to front & rear cab pillars. Estimated Installation Time: 2 hrs.	

E42 R2-Series

Bobcat Compact Excavator

Dealer Installed Accessories - Order From Parts	
Part Number	Description
7382104	Long Arm Kit..... \$ _____ If installing on standard arm, must also install Counterweight Add-On Kit PN 7350483. Estimated Installation Time: 3 hrs.
7389929	Long Arm Second Aux Kit..... \$ _____ Provides 12.0 GPM maximum flow. Estimated Installation Time: 4 hrs.
7173148	Mirror Kit..... \$ _____ Estimated Installation Time: 0.5 hr.
7185281	Pin-On X-Change Kit..... \$ _____ Estimated Installation Time: 1.0 hr.
7395036	Hydraulic X-Change Kit, Ext. Arm..... \$ _____ Estimated Installation Time: 3 hrs.
7383337	Hydraulic X-Change Kit, Short & Long Arm)..... \$ _____ Estimated Installation Time: 3 hrs.
7229098	Radio, Bluetooth Kit – Cab only..... \$ _____ Must also order speaker & antenna kit PN 7228595 if not already installed. Estimated Installation Time: 1.0 hr.
6988434	Radio Kit – Cab only..... \$ _____ Must also order speaker & antenna kit PN 7228595 if not already installed. Estimated Installation Time: 1.0 hr.
7420941	Rearview Camera Kit..... \$ _____ Note: the 7" touch display is required for this kit installation. Estimated Installation Time: 1 hr.
7241205	Right Hand Boom Light Kit..... \$ _____ Estimated Installation Time: 1.0 hr.
7343518	Seat Back Extension Kit - Cloth..... \$ _____ Estimated Installation Time: 0.5 hr.
7343521	Seat Back Extension Kit - Vinyl..... \$ _____ Estimated Installation Time: 0.5 hr.
7394826	Short Arm Diverter Kit..... \$ _____ Estimated Installation Time: 2 hrs.
7389928	Short Arm Second Aux Kit..... \$ _____ Provides 12.0 GPM maximum flow. Estimated Installation Time: 4 hrs.
7382105	Standard Arm Kit..... \$ _____ Estimated Installation Time: 4 hrs.
7192422	Bolt-On Rubber Pad Kit – E42 Only..... \$ _____ For use with steel tracks. Includes 94 pads. Estimated Installation Time: 2 hrs.
7391013	Steel Track Kit..... \$ _____ Estimated Installation Time: 4.0 hrs.
7172974	Strobe Light Kit..... \$ _____ Estimated Installation Time: 0.75 hr.
7379838	Translator Literature Kit..... \$ _____ Estimated Installation Time: 0.5 hrs.
7205970	Travel Motion Alarm Kit..... \$ _____ Estimated Installation Time: 2 hrs.
7280215	Window Shade Kit (R-Series only)..... \$ _____ Retractable window shade, covers top cab window. Estimated Installation Time: 2 hrs.
7303055	Window Access Kit..... \$ _____ Estimated Installation Time: 0.5 hr.
7241225	Work Lights Kit-Cab..... \$ _____ Additional front work lights (2), and rear work light (1). Mounts to front & rear cab pillars.

E50 R2-Series

Bobcat Compact Excavator

Dealer Installed Accessories - Order From Parts	
Part Number	Description
7328972	Engine Block Heater..... \$ _____ Estimated Installation Time: 0.25 hrs.
7306976	Fire Extinguisher Kit..... \$ _____ Estimated Installation Time: 1 hr.
7383344	Geith Hydraulic Pin Grabber Kit..... \$ _____ Estimated Installation Time: 6 hrs.
7320485	Guard Kit, Front..... \$ _____ Front guard (metal screen) attaches to cab or canopy to provide additional operator protection. Estimated Installation Time: 1.5 hr.
7231496	HEPA Filter Kit..... \$ _____ Estimated Installation Time: 0.5 hr.
6693245	Keyed Ignition..... \$ _____ Estimated Installation Time: 1.0 hr.
7395035	Load Moment Alarm Kit..... \$ _____ Estimated Installation Time: 4.0 hrs.
7394827	Long Arm Diverter Kit..... \$ _____ Estimated Installation Time: 2 hrs.
7381663	Long Arm Kit..... \$ _____ If installing on standard arm, must also install Counterweight Add-On Kit PN 7350483. Estimated Installation Time: 4 hrs.
7390015	Long Arm Second Aux Kit..... \$ _____ Provides 12.0 GPM maximum flow. Estimated Installation Time: 4 Hours
7349578	Out Exhaust Kit..... \$ _____ Estimated Installation Time:
7173148	Mirror Kit..... \$ _____ Estimated Installation Time: 0.5 hr.
7185281	Pin-On X-Change Kit..... \$ _____ Estimated Installation Time: 1.0 hr.
7383338	Power X-Change Kit..... \$ _____ Estimated Installation Time: 3 hrs.
7229098	Radio, Bluetooth Kit – Cab only..... \$ _____ Must also order speaker & antenna kit PN 7228595 if not already installed. Estimated Installation Time: 1.0 hr.
6988434	Radio Kit – Cab only..... \$ _____ Must also order speaker & antenna kit PN 7228595 if not already installed. Estimated Installation Time: 1.0 hr.
7420941	Rearview Camera Kit..... \$ _____ Note: the 7" touch display is required for this kit installation. Estimated Installation Time: 1 hr.
7241205	Right Hand Boom Light Kit..... \$ _____ Estimated Installation Time: 1.0 hr.
7343518	Seat Back Extension Kit - Cloth..... \$ _____ Estimated Installation Time: 0.5 hr.
7343521	Seat Back Extension Kit - Vinyl..... \$ _____ Estimated Installation Time: 0.5 hr.
7394826	Short Arm Diverter Kit..... \$ _____ Estimated Installation Time: 2 hrs.
7390014	Short Arm Second Aux Kit..... \$ _____ Provides 12.0 GPM maximum flow. Estimated Installation Time: 4 Hours
7381664	Standard Arm Kit..... \$ _____ Estimated Installation Time: 4 hrs.

E60 R2-Series**Bobcat Compact Excavator**

Part Number	Description	Compact Excavator
--------------------	--------------------	--------------------------

M3321	E60 R2-Series Compact Excavator.....	\$73,562
-------	--------------------------------------	----------

Part Number	Description	Comfort Cab Packages
--------------------	--------------------	-----------------------------

MUST EITHER SELECT A BASE CONFIGURATION WITH NO OPTIONS OR SELECT ONE COMFORT AND ONE PERFORMANCE PACKAGE OR SELECT ONE EXTENDABLE ARM PACKAGE, OR SELECT INDIVIDUAL OPTIONS

M3321-P07-C11	C11 Comfort Package..... Includes Open Canopy, Travel Motion Alarm, and Vinyl Suspension Seat	\$310
M3321-P07-C21	C21 Comfort Package..... Includes Open Canopy, Bobcat 7 inch Touch Display with Radio and Bluetooth, Travel Motion Alarm, and Vinyl Suspension Seat	\$1,815
M3321-P07-C42	C42 Comfort Package..... Includes Enclosed Cab with HVAC, Cloth Suspension Seat, Travel Motion Alarm, and Radio	\$9,379
M3321-P07-C52	C52 Comfort Package..... Includes Enclosed Cab with HVAC, Bobcat 7 inch Touch Display with Radio and Bluetooth, Cloth Suspension Seat, and Travel Motion Alarm	\$10,451
M3321-P07-C62	C62 Comfort Package..... Includes Enclosed Cab with Auto HVAC, Bobcat 7 inch Touch Display with Radio and Bluetooth, Heated High Back Cloth Suspension Seat with Headrest, and Travel Motion Alarm	\$11,340

Part Number	Description	Performance Cab Packages
--------------------	--------------------	---------------------------------

MUST EITHER SELECT A BASE CONFIGURATION WITH NO OPTIONS OR SELECT ONE COMFORT AND ONE PERFORMANCE PACKAGE OR SELECT ONE EXTENDABLE ARM PACKAGE, OR SELECT INDIVIDUAL OPTIONS

M3321-P06-P50	P50 Performance Package..... Includes Long Arm	\$0
M3321-P06-P60	P60 Performance Package..... Includes Long Arm and Clamp with Diverter Valve	\$3,333
M3321-P06-P62	P62 Performance Package..... Includes Long Arm, Clamp with Diverter Valve, and Hydraulic X-Change	\$5,204
M3321-P06-P64	P64 Performance Package..... Includes Long Arm, Clamp with Diverter Valve, Hydraulic X-Change and Add-on Counterweight	\$6,808
M3321-P06-P70	P70 Performance Package..... Includes Long Arm and Angle Blade	\$3,167
M3321-P06-P71	P71 Performance Package..... Includes Long Arm, Angle Blade and Add-on Counterweight	\$4,771
M3321-P06-P82	P82 Performance Package..... Includes Long Arm, Angle Blade, Clamp with Diverter Valve, and Hydraulic X-Change	\$8,372

E60 R2-Series

Bobcat Compact Excavator

Dealer Installed Accessories - Order From Parts	
Part Number	Description
7391016	Direct to Tank Kit..... \$ _____ Estimated Installation Time:
7328972	Engine Block Heater..... \$ _____ Estimated Installation Time: 0.25 hrs.
7424900	Extendable Arm Kit..... \$ _____ Estimated Installation Time: 4 hrs.
7424899	Extendable Arm Second Aux Kit..... \$ _____ Provides 12.0 GPM maximum flow. Estimated Installation Time: 4 hrs.
7306976	Fire Extinguisher Kit..... \$ _____ Estimated Installation Time: 1 hr.
7400617	Geith Hydraulic Pin Grabber Kit..... \$ _____ Estimated Installation Time: 6 hrs.
7410101	Guard Kit, Front..... \$ _____ Front guard (metal bars) attaches to cab or canopy to provide additional operator protection. Estimated Installation Time: 1.5 hr.
7320462	Guard Kit, Top..... \$ _____ Provides additional operator protection – Level II FOPS. Estimated Installation Time: 0.25 hr.
7231496	HEPA Filter Kit..... \$ _____ Estimated Installation Time: 0.5 hr.
7425282	Hydraulic X-Change Kit, Extendable Arm..... \$ _____ Estimated Installation Time: 3 hrs.
6693245	Keyed Ignition..... \$ _____ Estimated Installation Time: 1.0 hr.
7395035	Load Moment Alarm Kit..... \$ _____ Estimated Installation Time: 4.0 hrs.
7394827	Long Arm Diverter Kit..... \$ _____ Estimated Installation Time: 2 hrs.
7415236	Long Arm Second Aux Kit..... \$ _____ Provides 12.0 GPM maximum flow. Estimated Installation Time: 4 hrs.
7383338	Power X-Change Kit..... \$ _____ Estimated Installation Time: 3 hrs.
7229098	Radio, Bluetooth Kit – Cab only..... \$ _____ Must also order speaker & antenna kit PN 7228595 if not already installed. Estimated Installation Time: 1.0 hr.
6988434	Radio Kit – Cab only..... \$ _____ Must also order speaker & antenna kit PN 7228595 if not already installed. Estimated Installation Time: 1.0 hr.
7420941	Rearview Camera Kit..... \$ _____ Note: the 7" touch display is required for this kit installation. Estimated Installation Time: 1 hr.
7343518	Seat Back Extension Kit - Cloth..... \$ _____ Estimated Installation Time: 0.5 hr.
7343521	Seat Back Extension Kit - Vinyl..... \$ _____ Estimated Installation Time: 0.5 hr.
7199213	Bolt-On Rubber Pad Kit – (E50, E60 R2-Series) (E45, E50, & E55 M-series) Only..... \$ _____ For use with steel tracks only. Includes 78 pads. Available only for S/N AG3G11113 & above (E45). Estimated Installation Time: 3 hrs.
7391015	Segmented Track Kit..... \$ _____ Rubber over steel segmented tracks. Estimated Installation Time: 4.0 hrs.
7391014	Steel Track Kit..... \$ _____ Estimated Installation Time: 4 hrs.

E60 R2-Series

Bobcat Compact Excavator

Dealer Installed Accessories - Order From Parts		
Part Number	Description	
7332351	Strobe Kit.....	\$ _____
	Estimated Installation Time: 0.5 hr.	
7415218	Translator Literature Kit.....	\$ _____
7205970	Travel Motion Alarm Kit.....	\$ _____
	Estimated Installation Time: 2 hrs.	
7415332	Window Sunshade.....	\$ _____
	Retractable window shade, covers top cab window. Estimated Installation Time: 2 hrs.	
7330011	Window Access Kit.....	\$ _____
	Estimated Installation Time: 0.5 hrs.	
7413562	Work Light LED Kit.....	\$ _____
	Cab and Canopy - Provides 2 front mounted and 1 rear mounted LED Lights	
7413564	Rear Work Light LED Kit.....	\$ _____
	Cab and Canopy - Provides 1 rear mounted LED Light	

E85 R-Series

Bobcat Compact Excavator



Standard Equipment

- | | |
|--|---------------------------------------|
| Auto-Idle | Fingertip Auxiliary Hydraulic Control |
| Auto-Shift, 2-Speed Travel | Fingertip Boom Swing Control |
| Auxiliary Hydraulics with Selectable Flow | Horn |
| - W/ Boom Mounted Flush Face Quick Couplers | Lift Point |
| Boom Swing | Mirrors, Left, and Right |
| Cab, Enclosed with HVAC - ROPS/TOPS & Level I FOPS | Pin-On Attachment Mounting System |
| - Includes: Cup Holder, Retractable Seat Belt, | Rubber Tracks |
| Suspension Seat | Telematics |
| Control Console Locks | Turbocharged, Tier 4, Non DPF |
| Control Pattern Selector Valve (ISO/STD) | Telematics |
| Dozer Blade with Float | Work Lights |
| Engine/Hydraulic Monitor with Shutdown | |

Quick Specs

	<u>E85</u>
	<u>Long Arm</u>
Engine Model (Tier 4).....	Bobcat 2.4L
Horsepower.....	65.9
Rated speed-RPM.....	2100
Auxiliary Hydraulics Flow.....	25.1 GPM
Travel Speed (Maximum).....	2.9 MPH
Operating Weight*.....	18,977 lbs.
Shipping Weight.....	18,398 lbs.
Cab Height.....	100"
Width.....	87.0"
Length, Transport.....	20' 6"
Dig Depth.....	15' 5"
Reach at Ground Level.....	23' 8"
Dump Height.....	16' 7"
Arm Length.....	89"
Boom Swing (Left).....	64°
Boom Swing (Right).....	61°
Bucket Breakout Force.....	13,269 lbf.
Arm Breakout Force.....	8,253 lbf.
Tail Swing Overhang.....	13"

*Operating Weight includes canopy, rubber tracks, applicable counterweight, standard bucket, fluids full and 165 lb. (75KG) operator.

E85 R-Series

Bobcat Compact Excavator

Part Number	Description	Compact Excavator
--------------------	--------------------	--------------------------

M3325	E85 Compact Excavator	\$108,506
M3325-R51-C03	Telematics, Canada.....	\$0
M3325-R51-C02	Telematics, US.....	\$0

Part Number	Description	Comfort Cab Packages
--------------------	--------------------	-----------------------------

MUST EITHER SELECT A BASE CONFIGURATION WITH NO OPTIONS OR SELECT ONE COMFORT AND ONE PERFORMANCE PACKAGE OR SELECT INDIVIDUAL OPTIONS

M3325-P07-C42	C42 Comfort Package..... Includes Enclosed Cab with HVAC, Cloth Suspension Seat, Travel Motion Alarm, and Radio	\$743
M3325-P07-C62	C62 Comfort Package..... Includes Enclosed Cab with Auto HVAC, Heated Cloth Suspension Seat, Travel Motion Alarm, 7" Display with Keyless Start and Radio	\$2,374

Part Number	Description	Performance Cab Packages
--------------------	--------------------	---------------------------------

MUST EITHER SELECT A BASE CONFIGURATION WITH NO OPTIONS OR SELECT ONE COMFORT AND ONE PERFORMANCE PACKAGE OR SELECT INDIVIDUAL OPTIONS

M3325-P06-P50	P50 Performance Package..... Includes Long Arm	\$0
M3325-P06-P60	P60 Performance Package..... Includes Long Arm and Clamp	\$4,243
M3325-P06-P63	P63 Performance Package..... Includes Long Arm, Add-on Counterweight, Clamp, Second Auxiliary Hydraulics, and Hydraulic Pin-Grabber	\$12,137
M3325-P06-P65	P65 Performance Package..... Includes Long Arm, Clamp, Second Auxiliary Hydraulics, and Hydraulic Pin-Grabber Ready	\$7,064
M3325-P06-P66	P66 Performance Package..... Includes Long Arm, Add-on Counterweight, Clamp, Second Auxiliary Hydraulics, Hydraulic Pin-Grabber, and Steel Tracks	\$14,735
M3325-P06-P67	P67 Performance Package..... Includes Long Arm, Add-on Counterweight, Clamp, Second Auxiliary Hydraulics, Hydraulic Pin-Grabber, and Segmented Tracks	\$21,065
M3325-P06-P68	P68 Performance Package..... Includes Long Arm, Add-on Counterweight, Clamp, Second Auxiliary Hydraulics, Hydraulic Pin-Grabber, and Load Holding Valves w/ Alarm	\$14,488

E85 R-Series

Bobcat Compact Excavator

Part Number	Description	Individual Factory Options
-------------	-------------	----------------------------

CANNOT ADD TO ANY ORDER WITH COMFORT AND PERFORMANCE PACKAGE SELECTIONS OR EXTENDABLE ARM PACKAGE

NOTE: Individual Options SLP includes a 20% premium when compared to ordering the option in a package

M3325-A01-C36	Counterweight, Add-on.....	\$2,406
	Increases operating weight by 897 lbs.	
M3325-R01-C04	Enclosed Cab with Auto HVAC.....	\$672
	Includes Heated Cloth Suspension Seat	
M3325-R02-C02	Steel Tracks.....	\$3,118
	Increases operating weight by 234 lbs.	
M3325-R02-C04	Segmented Tracks.....	\$10,714
	Increases operating weight by 362 lbs.	
M3325-R06-C11	Hydraulic Activated Pin-Grabber Attachment Quick Coupler.....	\$5,659
	Machine ordered with Hydraulic Pin-Grabber includes one pair of attachment pins. Must order attachment pin kit PN 7328360 from PARTS for each additional attachment. Compatible with 55mm attachment pins only. Increases Operating Weight by 185 lbs.	
M3325-R06-C12	Pin Grabber Coupler Ready Hydraulic Plumbing Option.....	\$1,979
	Includes control circuit and hydraulic supply sytem for activating Geith hydraulic pin grabber. Compatible with Geith hydraulic activated pin grabbers only. Must order alternative quick coupler directly from Geith – does NOT include pin grabber.	
M3325-R07-C02	Secondary Auxiliary Hydraulics.....	\$1,406
	Provides 16.4 maximum GPM.	
M3325-R08-C04	Hydraulic Clamp.....	\$5,092
	Increases Operating Weight by 350 lbs.	
M3325-R11-C02	Travel Motion Alarm.....	\$372
M3325-R13-C03	Load Holding Valves, w/ Alarm.....	\$2,821
	Includes load hold valve circuitry on boom cylinder and on arm cylinder. Includes audible alarm to alert operator of lifting conditions. Provides additional security when using work group to lift and place items.	
M3325-R14-C05	7" Touch Display, with Radio.....	\$1,806
	Includes 7" Touch Display, Jog Shuttle, Keyless Start, Rear Camera ready, Integrated Radio and Bluetooth Connectivity	
M3325-R26-C02	Radio.....	\$520

****NOTE:** When adding a Clamp to an Extendable Arm Option, the Second Auxiliary Hydraulics option will automatically be added to the configuration. If adding field installed Clamp kit to an Extendable Arm machine, it is recommended that Second Auxiliary option be added to the machine. Pro Clamp™ is NOT compatible with Extendable Arm.

Part Number	Description	Dealer Installed Accessories - Order From Sales
-------------	-------------	---

7387821	Laser Receiver, CR700.....	\$474
	Can be used as handheld, machine, or re-mounted laser receiver. Includes magnetic mount for machines and clamp for rod mount.	
7160486	Laser Receiver, BLR2 (For use with Depth Check).....	\$2,099
	For use with Depth Check. Mounting Kit (7246898) must also be purchased from Parts. Estimated Installation Time: 0.25 hrs.	
7275232	Laser Transmitter Beacon, GL422N - (For use with Depth Check).....	\$2,679
	Dual Slope. Includes CR700 Receiver.	
6688806	Tripod for Laser Transmitter Beacon	\$268
	For use with GL422N laser transmitter.	

E85 R-Series

Bobcat Compact Excavator

Part Number Description Dealer Installed Accessories - Order From Parts

To ensure having the correct Part Number for a Dealer Installed Accessory, obtain the excavator model and serial number and check with the Dealer Parts Department. For the most current Dealer Installed Accessories pricing, refer to BobQuote or Dealer Parts Department.

UNLESS OTHERWISE NOTED, Dealer Installed Accessories Apply Only to R-Series E85.

7328360	Attachment Pin Kit (55mm).....	\$ _____
	For use with attachments that are used with the Pin-Grabber quick coupler. Applicable to 55mm pin diameter attachments only. Estimated Installation Time: 0.25 hr.	
7332349	Beacon Kit.....	\$ _____
	Estimated Installation Time: 0.5 hr.	
7317785	Case Drain Kit.....	\$ _____
	For use with Flail Mower attachment. Estimated Installation Time: 1.5 hrs.	
7307031	Counterweight, Add-On Kit.....	\$ _____
	Shipping weight = 900 lb. Increases tail swing overhang to 18". Estimated Installation Time:1.0	
7313758	Depth Check Kit.....	\$ _____
	Excavator must be equipped with Deluxe Panel. Estimated Installation Time: 2.0 hrs.	
7246898	Depth Check BLR2 Laser Mounting Kit.....	\$ _____
	Required if using BLR2 with Depth Check. Includes Magnetic Receiver Mount and Harness. (Referr to "Order From Sales" for BLR2)	
7328972	Engine Block Heater.....	\$ _____
	Estimated Installation Time: 0.25 hrs.	
6904762	Excavator Operator Safety DVD.....	\$ _____
	Includes both English and Spanish versions on one DVD	
6903186	Excavator Operator Training Kit.....	\$ _____
6900916	Excavator Service Safety Training Kit.....	\$ _____
7306976	Fire Extinguisher Kit.....	\$ _____
	Estimated Installation Time: 1 hr.	
7313401	Guard Kit, Front.....	\$ _____
	Provides additional operator protection. Estimated Installation Time: 0.5 hr.	
7320462	Guard Kit, Top.....	\$ _____
	Provides additional operator protection – Level II FOPS. Estimated Installation Time: 0.25 hr.	
7238484	Keyless Start Kit – For Standard Panel Machines.....	\$ _____
	Provides one Owner code and two User codes (five digit). Estimated Installation Time: 1.0 hr.	
6988434	Radio Kit – Cab only.....	\$ _____
	Must also order speaker & antenna kit PN 7228595 if not already installed. Estimated Installation Time: 1.0 hr.	
7420941	Rearview Camera Kit.....	\$ _____
	Note: the 7" touch display is required for this kit installation. Estimated Installation Time: 1 hr.	
7343519	Seat Back Extension (cloth).....	\$ _____
	Estimated Installation Time: 0.5 hr.	
7221147	Seat Belt, 3" Kit.....	\$ _____
	Estimated Installation Time: 1 hr.	
7319700	Secondary Auxiliary Kit.....	\$ _____
	Provides 16.4 GPM maximum flow. Estimated Installation Time: 4.0 hrs.	
7332351	Strobe Kit.....	\$ _____
	Estimated Installation Time: 0.5 hr.	
7338130	Travel Motion Alarm Kit.....	\$ _____
	Estimated Installation Time: 4.0 hrs.	
7311766	Rear Work Light Kit.....	\$ _____
	Includes additional work light (1) for rear of machine. Estimated Installation Time: 0.75 hr.	

Bobcat Large Excavator



Standard Equipment

- Auto-Idle
- Auto Shift, 2 Speed Travel
- Auto Shutoff
- Auxiliary Hydraulics with Selectable Flow
- Battery Disconnect
- Cab, Enclosed with Auto HVAC - ROPS
 - Includes: Adjustable Arm Rests, Cup Holder, Heated Air Suspension Seat, AM/FM Stereo with CD Player & MP3 Port, Retractable Seat Belt
- Camera: Rear and Side
- Control Lock-Out, disabling all machine functionality
- Control Pattern Selector Valve (ISO/STD)
- Display, 7" LCD
 - Password protected
- Emergency Stop Switch
- Engine/Hydraulic Monitor with Shutdown
- Engine Restart Prevention System
- Fingertip Auxiliary Hydraulic Control
- Horn (joystick mounted)
- Hydraulic Joystick Controls
- Mirrors, Left, and Right
- Pin-On Attachment Mounting System
- Power Boost
- Power Modes: Power+, Power, Standard, Economy
- Self-Diagnostics System
- Smart Power Control (SPC)
- Steel Tracks
- Telematics
- Travel Motion Alarm & Swing Alarm
- Turbocharged, Tier 4, Non DPF
- Two way Piping with Pedal and Fingertip Control
- Vandalism Protection
 - Includes: Locking Access Panels and Locking Fuel Cap
- Work Lights: Boom (2), House (1), and Rear (1)
- Work Modes: Dig, Lift, Breaker (single directional aux flow), & Shear (dual directional aux flow)
- 12 Volt Power Port
- Foot Pedal Attachment Control

Quick Specs

	E145
Engine Model (Tier 4).....	Perkins 1204F
Horsepower.....	115
Auxiliary Hydraulics Flow.....	60.2 GPM
Travel Speed (Maximum).....	2.9 MPH
Operating Weight*.....	34,987 lbs.
Cab Height.....	109"
Width.....	102.0"
Length, Transport.....	301.0"
Dig Depth.....	20' 2"
Reach at Ground Level.....	28'
Dump Height.....	21' 2"
Arm Length.....	118"
Bucket Breakout Force.....	24,471 lbf.
Arm Breakout Force.....	13,228 lbf.
Tail Swing Overhang.....	9.1"

*Operating Weight includes canopy, rubber tracks, applicable counterweight, standard bucket, fluids full and 165 lb. (75KG) operator.

Bobcat Large Excavator

Part Number	Description	Compact Excavator
--------------------	--------------------	--------------------------

M3330	E145 Excavator.....	\$173,324
-------	---------------------	-----------

Part Number	Description	Individual Factory Options
--------------------	--------------------	-----------------------------------

M3330-R01-C02	Dozer Blade..... Increases operating weight 2425 lbs.	\$10,509
---------------	--	----------

M3330-R02-C02	Segmented Rubber Tracks.....	\$10,546
---------------	------------------------------	----------

M3330-R03-C02	Hydraulic Activated Pin-Grabber Attachment Quick Coupler.....	\$7,465
---------------	---	---------

M3330-R04-C02	Hydraulic Clamp, 24" Bucket, Pin-on Attachment.....	\$8,411
---------------	---	---------

For use with 24" Bucket and Pin-on Attachment Interface

M3330-R04-C03	Hydraulic Clamp, 36" Bucket, Pin-on Attachment.....	\$8,411
---------------	---	---------

For use with 36" Bucket and Pin-on Attachment Interface

M3330-R04-C04	Hydraulic Clamp, 42" Bucket, Pin-on Attachment.....	\$8,411
---------------	---	---------

For use with 42" Bucket and Pin-on Attachment Interface

M3330-R04-C05	Hydraulic Clamp, 24" Bucket, Hydraulic Pin-Grabber.....	\$8,411
---------------	---	---------

For use with 24" Bucket and Hydraulic Pin-Grabber

M3330-R04-C06	Hydraulic Clamp, 36" Bucket, Hydraulic Pin-Grabber.....	\$8,411
---------------	---	---------

For use with 36" Bucket and Hydraulic Pin-Grabber

M3330-R04-C07	Hydraulic Clamp, 42" Bucket, Hydraulic Pin-Grabber.....	\$8,411
---------------	---	---------

For use with 42" Bucket and Hydraulic Pin-Grabber

M3330-R04-C08	Pro-Link Clamp, 24" Bucket, Hydraulic Pin-Grabber.....	\$10,880
---------------	--	----------

For use with 24" Bucket and Hydraulic Pin-Grabber

M3330-R04-C09	Pro-Link Clamp, 36" Bucket, Hydraulic Pin-Grabber.....	\$10,880
---------------	--	----------

For use with 36" Bucket and Hydraulic Pin-Grabber

M3330-R04-C10	Pro-Link Clamp, 42" Bucket, Hydraulic Pin-Grabber.....	\$10,880
---------------	--	----------

For use with 42" Bucket and Hydraulic Pin-Grabber

M3330-A01-C01	24" Trenching Bucket.....	\$3,580
---------------	---------------------------	---------

Bucket Capacity: 0.42 CU. YD.

M3330-A01-C02	36" Trenching Bucket.....	\$4,944
---------------	---------------------------	---------

Bucket Capacity: 0.71 CU. YD.

M3330-A01-C03	42" Trenching Bucket.....	\$4,636
---------------	---------------------------	---------

Bucket Capacity: 0.85 CU. YD.

M3330-A01-C04	60" Grading Bucket.....	\$5,132
---------------	-------------------------	---------

Bucket Capacity: 1.39 CU. YD.

M3330-A01-C04	60" Grading Bucket.....	\$5,132
---------------	-------------------------	---------

Bucket Capacity: 1.39 CU. YD.

Bobcat Large Excavator



Standard Equipment

- | | |
|---|---|
| Auto-Idle | Hydraulic Joystick Controls |
| Auto Shift, 2 Speed Travel | Mirrors, Left, and Right |
| Auto Shutoff | Pin-On Attachment Mounting System |
| Auxiliary Hydraulics with Selectable Flow | Power Boost |
| Battery Disconnect | Power Modes: Power+, Power, Standard, Economy |
| Cab, Enclosed with Auto HVAC - ROPS | Self-Diagnostics System |
| - Includes: Adjustable Arm Rests, Cup Holder, Heated Air Suspension | Smart Power Control (SPC) |
| Seat, AM/FM Stereo with CD Player & MP3 Port, Retractable Seat Belt | Steel Tracks |
| Camera: Rear and Side | Telematics - Machine IQ |
| Control Lock-Out, disabling all machine functionality | Travel Motion & Swing Alarm |
| Control Pattern Selector Valve (ISO/STD) | Turbocharged, Tier 4, Non DPF |
| Display, 7" LCD | Two-Way Piping with Pedal and Fingertip Control |
| - Password protected | Vandalism Protection |
| Emergency Stop Switch | - Includes: Locking Access Panels and Locking Fuel Cap |
| Engine/Hydraulic Monitor with Shutdown | Work Lights: Boom (2), House (1), and Rear (1) |
| Engine Restart Prevention System | Work Modes: Dig, Lift, Breaker (single directional aux flow), & Shear (dual directional aux flow) |
| Fingertip Auxiliary Hydraulic Control | 12 Volt Power Port |
| Foot Pedal Attachment Control | |
| Horn (joystick mounted) | |

Quick Specs

	E165
Engine Model (Tier 4).....	Perkins 1204F
Horsepower.....	131
Auxiliary Hydraulics Flow.....	80.4 GPM
Travel Speed (Maximum).....	3.1 MPH
Operating Weight*.....	38,376 lbs.
Cab Height.....	115"
Width.....	102"
Length, Transport.....	325"
Dig Depth.....	20'
Reach at Ground Level.....	28' 10"
Dump Height.....	21' 4"
Arm Length.....	98"
Bucket Breakout Force.....	25,794 lbf.
Arm Breakout Force.....	18,077 lbf.
Tail Swing Overhang.....	7.0"

*Operating Weight includes canopy, rubber tracks, applicable counterweight, standard bucket, fluids full and 165 lb. (75KG) operator.

Bobcat Large Excavator

Part Number	Description	Compact Excavator
--------------------	--------------------	--------------------------

M3332	E165 Excavator.....	\$180,257
-------	---------------------	-----------

Part Number	Description	Individual Factory Options
--------------------	--------------------	-----------------------------------

M3332-A01-C02	36" Trenching Bucket.....	\$4,812
M3332-A01-C03	42" Trenching Bucket.....	\$5,375
M3332-A01-C05	48" Trenching Bucket.....	\$5,891
M3332-A01-C04	60" Ditching Bucket.....	\$6,336
M3332-R03-C02	Hydraulic Activated Pin Grabber Attachment Quick Coupler.....	\$7,629
M3332-R04-C03	Hydraulic Clamp, for 36"/42" Pin On Bucket	\$8,925
M3332-R04-C02	Hydraulic Clamp, for 36"/42" Bucket and Hydraulic Pin Grabber.....	\$8,925
M3332-R04-C04	Pro-Link Clamp, for 36"/42" Bucket and Hydraulic Pin Grabber.....	\$10,919

Discontinued Models

The following M-Series models have been discontinued and are no longer available: E26, E42, E45, & E50

E26

Bobcat Compact Excavator



Standard Equipment

- Auto-Idle
- Auto-Shift, 2-Speed Travel
- Auxiliary Hydraulics –
 - W/ Boom Mounted Flush Face Quick Couplers
- Canopy
 - Includes: Cup Holder, Retractable Seat Belt
 - Roll Over Protective Structure (ROPS) – Meets Requirements of ISO 12117-2: 2008
 - Tip Over Protective Structure (TOPS) – Meets Requirements of ISO 12117: 2000
- Control Console Locks
- Control Pattern Selector Valve (ISO/STD)
- Dozer Blade with Float
- Engine/Hydraulic Systems Shutdown
- Fingertip Auxiliary Hydraulic Control
- Fingertip Boom Swing Control
- Horn
- Hydraulic Joystick Controls
- Rubber Tracks
- Spark Arrestor Muffler
- Telematics
- Vandalism Protection
- Work Lights
- X- Change™ Attachment Mounting System

Quick Specs

	E26M	
	Std Arm	Long Arm
Engine Model (Tier 4).....	V1505	V1505
Horsepower.....	24.8	24.8
Auxiliary Hydraulics Flow.....	12.5 GPM	12.5 GPM
Travel Speed (Maximum).....	2.8 MPH	2.8 MPH
Operating Weight*.....	5763 lbs.	6190 lbs.
Shipping Weight.....	5576 lbs.	6003 lbs.
Operator Guard Height.....	95"	95"
Width.....	61"	61"
Length, Transport.....	171"	171"
Dig Depth.....	8' 10"	9' 10"
Reach at Ground Level.....	15' 4"	16' 4"
Dump Height.....	9' 6"	10' 2"
Arm Length.....	43.3"	55.1"
Boom Swing (Left).....	60°	60°
Boom Swing (Right).....	60°	60°
Bucket Breakout Force.....	4991 lbf.	4991 lbf.
Arm Breakout Force.....	3586 lbf.	2967 lbf.
Tail Swing Overhang.....	0.0"	2.6"

*Operating Weight includes canopy, rubber tracks, applicable counterweight, standard bucket, fluids full and 165 lb. (75KG) operator.

Bobcat Compact Excavator

Part		Compact Excavator	
Number	Description		
M3003	E26 ZTS Compact Excavator		\$38,111
M3003-R51-C03	Telematics, Canada.....		\$0
M3003-R51-C02	Telematics, US.....		\$0

Part		Factory Installed Options (Cab ZC option adds approximately 284 lbs to operating weight)	
Number	Description		
M3303-P01-A20	A20 Option Package..... Includes Enclosed Cab with HVAC and Cloth Suspension Seat.		\$6,423
M3303-P01-A40	A40 Option Package..... Includes Enclosed Cab with HVAC, Cloth Suspension Seat, Deluxe Display Panel w/ Keyless Start and Radio.		\$7,425

Part		Open Canopy Package	
Number	Description		
M3003-P01-O40	O40 Option Package..... Includes Open Canopy, Vinyl Suspension Seat and Deluxe Display Panel w/ Keyless Start		\$782

Part		Factory Installed Options	
Number	Description		
M3003-R08-C_	Hydraulic Clamp..... Available for Standard Arm and Long Arm. Increases operating weight by 126 lb.		\$1,946
M3003-R03-C02	Long Arm..... Includes additional rear counterweight. Increases operating weight by 425 lbs.		\$1,415
M3003-R07-C02	Second Auxiliary Hydraulics..... Provides up to 4 GPM for secondary hydraulic functions.		\$1,172
M3003-R11-C02	Travel Motion Alarm.....		\$310

Part		Dealer Installed Accessories - Order From Sales	
Number	Description		
7387821	Laser Receiver, CR700..... Can be used as handheld, machine, or re-mounted laser receiver. Includes magnetic mount for machines and clamp for rod mount.		\$474

Part		Dealer Installed Accessories - Order From Parts	
Number	Description		

To ensure having the correct Part Number for a Dealer Installed Accessory, obtain the excavator model and serial number and check with the Dealer Parts Department. For the most current Dealer Installed Accessories pricing, refer to BobQuote or Dealer Parts Department.

7010428	3" Seat Belt..... Must also order installation instructions PN 6989413. Estimated Installation Time: 1.0 hrs.		\$ _____
7172554	Beacon Kit..... Estimated Installation Time: 1 hr.		\$ _____
6989240	Canopy Enclosure Kit – Vinyl (M-Series only)..... Estimated Installation Time: 1.5 hrs.		\$ _____
7244918	Case Drain Kit..... Estimated Installation Time: 1.5 hrs.		\$ _____
7217451	Catalytic Exhaust Purifier..... Estimated Installation Time: 1 hr.		\$ _____
7204030	Counterweight Add-On Kit..... Increases tail swing by 2.8". Shipping Weight – 403 lbs. Estimated Installation Time: 1.5 hrs.		\$ _____

Bobcat Compact Excavator

Part Number	Description	Dealer Installed Accessories - Order From Parts
-------------	-------------	---

To ensure having the correct Part Number for a Dealer Installed Accessory, obtain the excavator model and serial number and check with the Dealer Parts Department. For the most current Dealer Installed Accessories pricing, refer to BobQuote or Dealer Parts Department.

7240592	Deluxe Display Panel Kit with Keyless Start.....	\$ _____
	Front guard (metal screen) attaches to cab or canopy to provide additional operator protection.	
	Estimated Installation Time: 0.75 hr.	
7206142	Direct to Tank Kit.....	\$ _____
	Reduces back pressure on auxiliary return line. Estimated Installation Time: 2 hrs.	
6729692	Engine Block Heater.....	\$ _____
	Estimated Installation Time: 1 hr.	
6904762	Excavator Operator Safety DVD.....	\$ _____
	Includes both English and Spanish versions on one DVD	
6903186	Excavator Operator Training Kit.....	\$ _____
6900916	Excavator Service Safety Training Kit.....	\$ _____
7268308	Fire Extinguisher Kit.....	\$ _____
7268309	Fire Extinguisher Kit.....	\$ _____
	Estimated Installation Time: 1 hrs.	
7311904	Guard Kit, Front.....	\$ _____
	Front guard (metal screen) attaches to cab or canopy to provide additional operator protection.	
	Estimated Installation Time: 0.75 hr.	
7173308	Guard Kit, Top (FOPS) Canopy.....	\$ _____
	Provides additional operator protection from falling objects. Estimated Installation Time: 0.5 hr.	
7173584	Guard Kit, Top (FOPS) Cab Kit.....	\$ _____
	Provides additional operator protection from falling objects. Estimated Installation Time: 0.5 hr.	
7268270	Long Arm Kit.....	\$ _____
	Shipping Weight – 186 lbs. Requires Counterweight Add-On Kit PN 7204030. Estimated Installation Time: 2 hrs.	
7173148	Mirror Kit.....	\$ _____
	Estimated Installation Time: 0.5 hr.	
6988434	Radio Kit – Cab only.....	\$ _____
	Must also order speaker & antenna kit PN 7228595 if not already installed. Estimated Installation Time: 1.0 hr.	
7229098	Radio, Bluetooth Kit – Cab only.....	\$ _____
	Must also order speaker & antenna kit PN 7228595 if not already installed. Estimated Installation Time: 1.0 hr.	
7228595	Speaker & Antenna Kit (Cab machine only).....	\$ _____
	Estimated Installation Time: 1.0 hr.	
7228286	Secondary Auxiliary Hydraulics Kit.....	\$ _____
	Provides up to 4 GPM secondary auxiliary flow. Estimated Installation Time: 4 hr.	
7172974	Strobe Light Kit.....	\$ _____
	Estimated Installation Time: 0.75 hr.	
7204641	Travel Motion Alarm Kit.....	\$ _____
	Estimated Installation Time: 2.0 hrs.	
7241225	Work Lights Kit-Cab.....	\$ _____
	Additional front work lights (2), and rear work light (1). Mounts to front & rear cab pillars.	
	Estimated Installation Time: 2 hrs.	
7241226	Work Lights Kit- Canopy.....	\$ _____
	Additional front work lights (2), and rear work light (1). Mounts to front & rear cab pillars.	
	Estimated Installation Time: 2 hrs.	

Bobcat Compact Excavator



Standard Equipment

- | | |
|---|--|
| Auto-Idle | Dozer Blade with Float |
| Auto-Shift, 2-Speed Travel | Engine/Hydraulic Monitor with Shutdown |
| Auxiliary Hydraulics with Selectable Flow | Fingertip Auxiliary Hydraulic Control |
| - W/ Boom Mounted Flush Face Quick Couplers | Fingertip Boom Swing Control |
| Canopy | Horn |
| - Includes: Cup Holder, Retractable Seat Belt, | Hydraulic Joystick Controls |
| Suspension Seat with High Back | Rubber Tracks |
| - Roll Over Protective Structure (ROPS) – Meets | Spark Arrestor Exhaust System |
| Requirements of ISO 12117-2: 2008 | Telematics |
| - Tip Over Protective Structure (TOPS) – Meets | Turbocharged, Tier 4, Non DPF |
| Requirements of ISO 12117: 2000 | Vandalism Protection |
| Control Console Locks | Work Lights |
| Control Pattern Selector Valve (ISO/STD) | X- Change™ Attachment Mounting System |

Quick Specs

	<u>E42M</u>			<u>E45M</u>		
	<u>Std Arm</u>	<u>Long Arm</u>	<u>Ext Arm</u>	<u>Std Arm</u>	<u>Long Arm</u>	<u>Ext Arm</u>
Engine Model (Tier 4).....	D24	D24	D24	D24	D24	D24
Horsepower.....	42.7	42.7	42.7	42.7	42.7	42.7
Rated Speed-RPM.....	2200	2200	2200	2200	2200	2200
Auxiliary Hydraulics Flow.....	20.0 GPM	20.0 GPM	20.0 GPM	20.0 GPM	20.0 GPM	20.0 GPM
Travel Speed (Maximum).....	2.9 MPH	2.9 MPH	2.9 MPH	2.6 MPH	2.6 MPH	2.6 MPH
Operating Weight*.....	9246 lbs.	9722 lbs.	9976 lbs.	10077 lbs.	10553 lbs.	10807 lbs.
Shipping Weight.....	9025 lbs.	9501 lbs.	9755 lbs.	9774 lbs.	10250 lbs.	10504 lbs.
Cab Height.....	99.0"	99.0"	99.0"	99.7"	99.7"	99.7"
Width.....	70.0"	70.0"	70.0"	77.2"	77.2"	77.2"
Length, Transport.....	200"	202"	201"	211"	212"	211"
Dig Depth.....	10' 6"	11' 6"	12' 6"	10' 10"	11' 10"	12' 10"
Reach at Ground Level.....	17' 3"	18' 3"	19' 1"	18' 7"	19' 7"	20' 6"
Dump Height.....	12' 3"	12' 10"	13' 3"	11' 11"	12' 6"	13' 10"
Arm Length.....	55.1"	66.9"	55.0"-79.0"	55.1"	66.9"	55.0"-79.0"
Boom Swing (Left).....	75°	75°	75°	75°	75°	75°
Boom Swing (Right).....	50°	50°	50°	50°	50°	50°
Bucket Breakout Force.....	9183 lbf.	9183 lbf.	9183 lbf.	7650 lbf.	7650 lbf.	7650 lbf.
Arm Breakout Force.....	5672 lbf.	4953 lbf.	5672 lbf.	5332 lbf.	4690 lbf.	5332 lbf.
Tail Swing Overhang.....	16.9"	17.6"	17.6"	0.0"	0.6"	0.6"

*Operating Weight includes canopy, rubber tracks, applicable counterweight, standard bucket, fluids full and 165 lb. (75KG) operator.

Bobcat Compact Excavator

Part Number	Description	Compact Excavator
-------------	-------------	-------------------

M3213	E42 Compact Excavator	\$54,731
M3215	E45 Compact Excavator	\$61,078
M32__-R51-C03	Telematics, Canada.....	\$0
M32__-R51-C02	Telematics, US.....	\$0

Part Number	Description	Comfort Cab Packages
-------------	-------------	----------------------

MUST EITHER SELECT A BASE CONFIGURATION WITH NO OPTIONS OR SELECT ONE COMFORT AND ONE PERFORMANCE PACKAGE OR SELECT ONE EXTENDABLE ARM PACKAGE, OR SELECT INDIVIDUAL OPTIONS

M32__-P07-C11	C11 Comfort Package..... Includes Open Canopy, Travel Motion Alarm, and Vinyl Suspension Seat.	\$310
M32__-P07-C21	C21 Comfort Package..... Includes Open Canopy, Deluxe Instrument Panel with Keyless Start, Travel Motion Alarm, and Vinyl Suspension Seat.	\$868
M32__-P07-C42	C42 Comfort Package..... Includes Enclosed Cab with HVAC, Cloth Suspension Seat, Travel Motion Alarm, and Radio	\$7,166
M32__-P07-C52	C52 Comfort Package..... Includes Enclosed Cab with HVAC, Deluxe Instrument Panel with Keyless Start, Cloth Suspension Seat, Travel Motion Alarm, and Radio	\$7,724

Part Number	Description	Performance Cab Packages
-------------	-------------	--------------------------

MUST EITHER SELECT A BASE CONFIGURATION WITH NO OPTIONS OR SELECT ONE COMFORT AND ONE PERFORMANCE PACKAGE OR SELECT ONE EXTENDABLE ARM PACKAGE, OR SELECT INDIVIDUAL OPTIONS

M32__-P06-P10	P10 Performance Package	\$0
	Includes Short Arm	
M32__-P06-P22	P22 Performance Package	\$4,519
	Includes Short Arm, Clamp, and Hydraulic X-Change	
M32__-P06-P50	P50 Performance Package	\$2,215
	Includes Long Arm	
M32__-P06-P60	P60 Performance Package	\$4,863
	Includes Long Arm and Clamp	
M32__-P06-P63	P63 Performance Package	\$8,222
	Includes Long Arm, Clamp, Second Auxiliary Hydraulics, and Hydraulic X-Change	
M3213-P06-P70	P70 Performance Package for E42	\$5,138
	Includes Long Arm and Angle Blade	
M3215-P06-P70	P70 Performance Package For E45	\$5,383
	Includes Long Arm and Angle Blade	
M3213-P06-P83	P83 Performance Package For E42.....	\$11,145
	Includes Long Arm, Angle Blade, Clamp, Second Auxiliary Hydraulics, and Hydraulic X-Change	
M3215-P06-P83	P83 Performance Package For E45.....	\$11,390
	Includes Long Arm, Angle Blade, Clamp, Second Auxiliary Hydraulics, and Hydraulic X-Change	

Bobcat Compact Excavator

Part Number	Description	Extendable Arm Packages
-------------	-------------	-------------------------

MUST SELECT ONE EXTENABLE ARM PACKAGE CANNOT ADD COMFORT, PERFORMANCE, OR INDIVIDUAL OPTIONS

M32__-P08-E11	E11 Extendable Arm Package	\$6,812
	Includes Extendable Arm, Open Canopy, Travel Motion Alarm, and Vinyl Suspension Seat	
M3213-P08-E25	E25 Extendable Arm Package For E42.....	\$16,300
	Includes Extendable Arm, Open Canopy, Deluxe Instrument Panel with Keyless Start, Clamp, Hydraulic X-Change, Second Auxiliary Hydraulics, Angle Blade, Travel Motion Alarm, and Vinyl Suspension Seat	
M3215-P08-E25	E25 Extendable Arm Package For E45.....	\$16,545
	Includes Extendable Arm, Open Canopy, Deluxe Instrument Panel with Keyless Start, Clamp, Hydraulic X-Change, Second Auxiliary Hydraulics, Angle Blade, Travel Motion Alarm, and Vinyl Suspension Seat	
M32__-P08-E42	E42 Extendable Arm Package	\$14,230
	Includes Extendable Arm, Enclosed Cab with HVAC, Cloth Suspension Seat, Travel Motion Alarm, and Radio	
M3213-P08-E56	E56 Extendable Arm Package For E42.....	\$23,718
	Includes Extendable Arm, Enclosed Cab with HVAC, Deluxe Instrument Panel with Keyless Start, Cloth Suspension Seat, Clamp, Hydraulic X-Change, Second Auxiliary Hydraulics, Angle Blade, Travel Motion Alarm, and Radio	
M3215-P08-E56	E56 Extendable Arm Package For E45.....	\$23,963
	Includes Extendable Arm, Enclosed Cab with HVAC, Deluxe Instrument Panel with Keyless Start, Cloth Suspension Seat, Clamp, Hydraulic X-Change, Second Auxiliary Hydraulics, Angle Blade, Travel Motion Alarm, and Radio	

Bobcat Compact Excavator

Part Number	Description	Individual Factory Options
-------------	-------------	----------------------------

CANNOT ADD TO ANY ORDER WITH COMFORT AND PERFORMANCE PACKAGE SELECTIONS OR EXTENDABLE ARM PACKAGE

NOTE: Individual Options SLP includes a 20% premium when compared to ordering the option in a package

M32__-R03-C02	Arm Option - Long Arm w/ Heavy Counterweight..... Increases operating weight by 460 lbs.	\$2,658
M32__-R03-C03	Arm Option - Extendable Arm w/ Heavy Counterweight..... Increases operating weight by 730 lbs. Pro Clamp™ is not compatible with Extendable Arm.	\$7,802
M3213-R12-C02	Hydraulic Angle Blade for E42..... Increases operating weight by 170 lbs.	\$3,508
M3215-R12-C02	Hydraulic Angle Blade for E45..... Increases operating weight by 346 lbs.	\$3,800
M32__-R08-C__	Hydraulic Clamp (Class IV) – E42 or E45..... Available for Standard Arm, Long Arm and Extendable Arm. Note: Second Auxiliaries (M3221-R07-C03) are automatically included/added to machine configuration if adding Clamp to Extendable arm machine. Increases operating weight by 218 lb.	\$3,178
M32__-R06-C0__	Hydraulic X-Change..... Available for Standard Arm, Long Arm and Extendable Arm.	\$2,246
M32__-R26-C02	Radio (Not available with canopy).....	\$520
M32__-R01-C03	Enclosed Cab with HVAC..... Includes Cloth Suspension Seat	\$8,383
M32__-R14-C02	Deluxe Instrument Panel with Keyless Start for Canopy.....	\$670
M32__-R14-C04	Deluxe Instrument Panel with Keyless Start for Cab.....	\$670
M32__-R07-C0__	Second Auxiliary Hydraulics (12 GPM) Note: Second Auxiliaries are automatically included on Extendable Arm/Clamp optioned machines.	\$1,786
M32__-R02-C02	Steel Tracks..... Increases operating weight by 77 lbs.	\$3,508
M32__-R11-C02	Travel Motion Alarm.....	\$372

****NOTE:** When adding a Clamp to an Extendable Arm Option, the Second Auxiliary Hydraulics option will automatically be added to the configuration. If adding field installed Clamp kit to an Extendable Arm machine, it is recommended that Second Auxiliary option be added to the machine. Pro Clamp™ is NOT compatible with Extendable Arm.

Part Number	Description	Dealer Installed Accessories - Order From Sales
-------------	-------------	---

7387821	Laser Receiver, CR700..... Can be used as handheld, machine, or re-mounted laser receiver. Includes magnetic mount for machines and clamp for rod mount.	\$474
7160486	Laser Receiver, BLR2 (For use with Depth Check)..... For use with Depth Check. Mounting Kit (7246898) must also be purchased from Parts. Estimated Installation Time: 0.25 hrs.	\$2,099
7275232	Laser Transmitter Beacon, GL422N - (For use with Depth Check)..... Dual Slope. Includes CR700 Receiver.	\$2,679
6688806	Tripod for Laser Transmitter Beacon For use with GL422N laser transmitter.	\$268
7185279	Long Arm Kit..... If converting standard arm to long arm, must also order Counterweight Add-On kit PN 7241392 from Parts. Shipping Weight – 186 lbs. Estimated Installation Time: 3 hrs.	\$955

Bobcat Compact Excavator

Part Number	Description	Dealer Installed Accessories - Order From Parts
<i>To ensure having the correct Part Number for a Dealer Installed Accessory, obtain the excavator model and serial number and check with the Dealer Parts Department. For the most current Dealer Installed Accessories pricing, refer to BobQuote or Dealer Parts Department.</i>		
7245506	Auxiliary Coupler Block Kit, Fixed arm.....	\$ _____
	Includes Push-to-Release coupler block and case drain. Estimated Installation Time: 3 hrs.	
7245507	Auxiliary Coupler Block Kit, Ext. Arm.....	\$ _____
	Includes Push-to-Release coupler block and case drain. Estimated Installation Time: 3 hrs.	
7172554	Beacon Kit.....	\$ _____
	Estimated Installation Time: 1 hr.	
6989240	Canopy Enclosure Kit – Vinyl (M-Series only).....	\$ _____
	Estimated Installation Time: 1.5 hrs.	
7246494	Case Drain Kit – E42.....	\$ _____
	For use with Flail Mower attachment. Estimated Installation Time: 1.5 hrs.	
7245618	Case Drain Kit – E45, E50, & E55.....	\$ _____
	For use with Flail Mower attachment. Estimated Installation Time: 1.5 hrs.	
7241392	Counterweight Add-On Kit (Tier 4 Only).....	\$ _____
	Required if converting a standard arm machine to long arm or Extendable arm. Can also be used to increase lift stability of standard, long or extendable arm. Shipping Weight –500 lbs. Estimated Installation Time: 1 hr.	
7202728	Deflector, Louver.....	\$ _____
	Provides additional protection of engine components and deflects air flow exiting below engine. Must also order Bolt PN 29CM1016 qty (4) and Installation Instructions PN 6990165. Estimated installation time for Extendable Arm: 4 hrs.	
7240592	Deluxe Display Panel Kit with Keyless Start.....	\$ _____
	Provides one owner code & eight user codes. Estimated Install Time: 1.0 hr.	
7246892	Depth Check Kit, Long Arm And Angle blade.....	\$ _____
	Excavator must be equipped with Deluxe Panel. Estimated Installation Time: 3 hrs.	
7246892	Depth Check Kit, Long Arm And Angle blade.....	\$ _____
	Excavator must be equipped with Deluxe Panel. Estimated Installation Time: 3 hrs.	
7246894	Depth Check Kit, Standard Arm and Angle Blade.....	\$ _____
	Excavator must be equipped with Deluxe Panel. Estimated Installation Time: 3 hrs.	
7246895	Depth Check Kit, Standard Arm.....	\$ _____
	Excavator must be equipped with Deluxe Panel. Estimated Installation Time: 3 hrs.	
7246898	Depth Check BLR2 Laser Mounting Kit.....	\$ _____
	Required if using BLR2 with Depth Check. Includes Magnetic Receiver Mount and Harness. (Referr to “Order From Sales” for BLR2)	
_____	Engine Block Heater Kit.....	\$ _____
	Estimated Installation Time: 1 hr.	
6904762	Excavator Operator Safety DVD.....	\$ _____
	Includes both English and Spanish versions on one DVD	
6903186	Excavator Operator Training Kit.....	\$ _____
6900916	Excavator Service Safety Training Kit.....	\$ _____
7221751	Extendable Arm Kit.....	\$ _____
	If installing on standard arm, must also install Counterweight Add-On Kit PN 7241392. Estimated installation time for Extendable Arm: 4 hrs.	
7268309	Fire Extinguisher Kit.....	\$ _____
	Estimated Installation Time: 1 hrs.	
7230850	Grading Blade Accessory – Class 4.....	\$ _____
	24” Grading Blade accessory for use with Pro Clamp System. Estimated Installation Time: 0.25 hr.	

Bobcat Compact Excavator

Part Number	Description	Dealer Installed Accessories - Order From Parts
-------------	-------------	---

To ensure having the correct Part Number for a Dealer Installed Accessory, obtain the excavator model and serial number and check with the Dealer Parts Department. For the most current Dealer Installed Accessories pricing, refer to BobQuote or Dealer Parts Department.

7311904	Guard Kit, Front.....	\$ _____
	Front guard (metal screen) attaches to cab or canopy to provide additional operator protection. Estimated Installation Time: 0.75 hr.	
7173308	Guard Kit, Top (FOPS) Canopy.....	\$ _____
	Provides additional operator protection from falling objects. Estimated Installation Time: 0.5 hr.	
7173584	Guard Kit, Top (FOPS) Cab Kit.....	\$ _____
	Provides additional operator protection from falling objects. Estimated Installation Time: 0.5 hr.	
7185283	Hydraulic X-change Kit.....	\$ _____
	Estimated Installation Time: 6 hrs.	
7221761	Hydraulic X-Change Kit – Extendable Arm.....	\$ _____
	Estimated Installation Time: 1.5 hrs.	
7238484	Keyless Start Kit – For Standard Panel Machines.....	\$ _____
	Provides one Owner code and two User codes (five digit). Estimated Installation Time: 1.0 hr.	
7242746	Lift Point Kit.....	\$ _____
	Check machine vintage for compatibility, may also require Bucket Link. Estimated Installation Time: 0.5 hr.	
7173148	Mirror Kit.....	\$ _____
	Estimated Installation Time: 0.5 hr.	
6988434	Radio Kit – Cab only.....	\$ _____
	Must also order speaker & antenna kit PN 7228595 if not already installed. Estimated Installation Time: 1.0 hr.	
7229098	Radio, Bluetooth Kit – Cab only.....	\$ _____
	Must also order speaker & antenna kit PN 7228595 if not already installed. Estimated Installation Time: 1.0 hr.	
7228595	Speaker & Antenna Kit (Cab machine only).....	\$ _____
	Estimated Installation Time: 1.0 hr.	
7010428	3" Seat Belt.....	\$ _____
	Must also order installation instructions PN 6989413. Estimated Installation Time: 1.0 hrs.	
7265278	Secondary Auxiliary Hydraulics Kit.....	\$ _____
	Provides 12 GPM maximum flow. Shipping weight 52 lbs. Estimated Installation Time: 4 hrs.	
7192422	Bolt-On Rubber Pad Kit – E42 Only.....	\$ _____
	For use with steel tracks. Includes 94 pads. Estimated Installation Time: 2 hrs.	
7199213	Bolt-On Rubber Pad Kit – (E50, E60 R2-Series) (E45, E50, & E55 M-series) Only.....	\$ _____
	For use with steel tracks only. Includes 78 pads. Available only for S/N AG3G11113 & above (E45). Estimated Installation Time: 3 hrs.	
7172974	Strobe Light Kit.....	\$ _____
	Estimated Installation Time: 0.75 hr.	
7205970	Travel Motion Alarm Kit.....	\$ _____
	Estimated Installation Time: 2 hrs.	
7241225	Work Lights Kit-Cab.....	\$ _____
	Additional front work lights (2), and rear work light (1). Mounts to front & rear cab pillars. Estimated Installation Time: 2 hrs.	
7241226	Work Lights Kit- Canopy.....	\$ _____
	Additional front work lights (2), and rear work light (1). Mounts to front & rear cab pillars. Estimated Installation Time: 2 hrs.	

Bobcat Compact Excavator



Standard Equipment

- | | |
|---|--|
| Auto-Idle | Dozer Blade with Float |
| Auto-Shift, 2-Speed Travel | Engine/Hydraulic Monitor with Shutdown |
| Auxiliary Hydraulics with Selectable Flow | Fingertip Auxiliary Hydraulic Control |
| - W/ Boom Mounted Flush Face Quick Couplers | Fingertip Boom Swing Control |
| Canopy | Horn |
| - Includes: Cup Holder, Retractable Seat Belt, | Hydraulic Joystick Controls |
| Suspension Seat with High Back | Rubber Tracks |
| - Roll Over Protective Structure (ROPS) – Meets | Spark Arrestor Exhaust System |
| Requirements of ISO 12117-2: 2008 | Turbocharged, Tier 4, Non DPF |
| - Tip Over Protective Structure (TOPS) – Meets | Telematics |
| Requirements of ISO 12117: 2000 | Vandalism Protection |
| Control Console Locks | Work Lights |
| Control Pattern Selector Valve (ISO/STD) | X- Change™ Attachment Mounting System |

Quick Specs

	<u>E50M</u>		
	<u>Std Arm</u>	<u>Long Arm</u>	<u>Ext Arm</u>
Engine Model (Tier 4).....	D24	D24	-
Horsepower.....	49.8	49.8	-
Auxiliary Hydraulics Flow.....	20.0 GPM	20.0 GPM	-
Travel Speed (Maximum).....	3.1 MPH	3.1 MPH	-
Operating Weight*.....	10677 lbs.	11195 lbs.	-
Shipping Weight.....	10374 lbs.	10892 lbs.	-
Cab Height.....	99.7"	99.7"	-
Width.....	77.2"	77.2"	-
Length, Transport.....	219"	219"	-
Dig Depth.....	11' 7"	12' 11"	-
Reach at Ground Level.....	19' 6"	20' 9"	-
Dump Height.....	12' 9"	13' 7"	-
Arm Length.....	60.0"	75.8"	-
Boom Swing (Left).....	75°	75°	-
Boom Swing (Right).....	50°	50°	-
Bucket Breakout Force.....	8977 lbf.	8977 lbf.	-
Arm Breakout Force.....	6744 lbf.	5751 lbf.	-
Tail Swing Overhang.....	0.6"	3.6"	-

*Operating Weight includes canopy, rubber tracks, applicable counterweight, standard bucket, fluids full and 165 lb. (75KG) operator.

Bobcat Compact Excavator

Part Number	Description	Compact Excavator
-------------	-------------	-------------------

M3219	E50 Compact Excavator	\$68,820
M32__-R51-C03	Telematics, Canada.....	\$0
M32__-R51-C02	Telematics, US.....	\$0

Part Number	Description	Comfort Cab Packages
-------------	-------------	----------------------

MUST EITHER SELECT A BASE CONFIGURATION WITH NO OPTIONS OR SELECT ONE COMFORT AND ONE PERFORMANCE PACKAGE OR SELECT ONE EXTENDABLE ARM PACKAGE, OR SELECT INDIVIDUAL OPTIONS

M32__-P07-C11	C11 Comfort Package..... Includes Open Canopy, Travel Motion Alarm, and Vinyl Suspension Seat.	\$310
M32__-P07-C21	C21 Comfort Package..... Includes Open Canopy, Deluxe Instrument Panel with Keyless Start, Travel Motion Alarm, and Vinyl Suspension Seat.	\$868
M32__-P07-C42	C42 Comfort Package..... Includes Enclosed Cab with HVAC, Cloth Suspension Seat, Travel Motion Alarm, and Radio	\$7,166
M32__-P07-C52	C52 Comfort Package..... Includes Enclosed Cab with HVAC, Deluxe Instrument Panel with Keyless Start, Cloth Suspension Seat, Travel Motion Alarm, and Radio	\$7,724

Part Number	Description	Performance Cab Packages
-------------	-------------	--------------------------

MUST EITHER SELECT A BASE CONFIGURATION WITH NO OPTIONS OR SELECT ONE COMFORT AND ONE PERFORMANCE PACKAGE OR SELECT ONE EXTENDABLE ARM PACKAGE, OR SELECT INDIVIDUAL OPTIONS

M3219-P06-P10	P10 Performance Package..... Includes Short Arm	\$0
M3219-P06-P22	P22 Performance Package..... Includes Short Arm, Clamp, and Hydraulic X-Change	\$4,519
M3219-P06-P50	P50 Performance Package..... Includes Long Arm	\$2,215
M3219-P06-P60	P60 Performance Package..... Includes Long Arm and Clamp	\$4,863
M3219-P06-P63	P63 Performance Package..... Includes Long Arm, Clamp, Second Auxiliary Hydraulics, and Hydraulic X-Change	\$8,222
M3219-P06-P70	P70 Performance Package..... Includes Long Arm and Angle Blade	\$5,383
M3219-P06-P83	P83 Performance Package..... Includes Long Arm, Angle Blade, Clamp, Second Auxiliary Hydraulics, and Hydraulic X-Change	\$11,390

Bobcat Compact Excavator

Part Number	Description	Individual Factory Options
-------------	-------------	----------------------------

CANNOT ADD TO ANY ORDER WITH COMFORT AND PERFORMANCE PACKAGE SELECTIONS OR EXTENDABLE ARM PACKAGE

NOTE: Individual Options SLP includes a 20% premium when compared to ordering the option in a package

M3219-R03-C02	Arm Option - Long Arm w/ Heavy Counterweight (E50 only)..... Increases operating weight by 460 lbs.	\$2,658
M3219-R12-C02	Hydraulic Angle Blade for E50..... Increases operating weight by 170 lbs.	\$3,800
M32__-R06-C0_	Hydraulic X-Change..... Available for Standard Arm, Long Arm and Extendable Arm.	\$2,246
M32__-R26-C02	Radio (Not available with canopy).....	\$520
M32__-R01-C03	Enclosed Cab with HVAC..... Includes Cloth Suspension Seat	\$8,383
M32__-R14-C02	Deluxe Instrument Panel with Keyless Start for Canopy.....	\$670
M32__-R14-C04	Deluxe Instrument Panel with Keyless Start for Cab.....	\$670
M32__-R07-C0_	Second Auxiliary Hydraulics (12 GPM) Note: Second Auxiliaries are automatically included on Extendable Arm/Clamp optioned machines.	\$1,786
M32__-R02-C02	Steel Tracks..... Increases operating weight by 77 lbs.	\$3,508
M32__-R11-C02	Travel Motion Alarm.....	\$372

**NOTE: When adding a Clamp to an Extendable Arm Option, the Second Auxiliary Hydraulics option will automatically be added to the configuration. If adding field installed Clamp kit to an Extendable Arm machine, it is recommended that Second Auxiliary option be added to the machine. Pro Clamp™ is NOT compatible with Extendable Arm.

Part Number	Description	Dealer Installed Accessories - Order From Sales
-------------	-------------	---

7387821	Laser Receiver, CR700..... Can be used as handheld, machine, or re-mounted laser receiver. Includes magnetic mount for machines and clamp for rod mount.	\$474
7160486	Laser Receiver, BLR2 (For use with Depth Check)..... For use with Depth Check. Mounting Kit (7246898) must also be purchased from Parts. Estimated Installation Time: 0.25 hrs.	\$2,099
7275232	Laser Transmitter Beacon, GL422N - (For use with Depth Check)..... Dual Slope. Includes CR700 Receiver.	\$2,679
6688806	Tripod for Laser Transmitter Beacon For use with GL422N laser transmitter.	\$268
7185287	Long Arm Kit (E50)..... Shipping Weight – 315 lbs. Estimated Installation Time: 3 hrs. (Counterweight required PN7241392)	\$1,179

Bobcat Compact Excavator

Part Number	Description	Dealer Installed Accessories - Order From Parts
--------------------	--------------------	--

To ensure having the correct Part Number for a Dealer Installed Accessory, obtain the excavator model and serial number and check with the Dealer Parts Department. For the most current Dealer Installed Accessories pricing, refer to BobQuote or Dealer Parts Department.

7245108	Auxiliary Coupler Block Kit, Fixed arm - E50/E55.....	\$ _____
	Includes Push-to-Release coupler block and case drain. Estimated Installation Time: 3 hrs.	
7245109	Auxiliary Coupler Block Kit, Ext. Arm – E55 Only.....	\$ _____
	Includes Push-to-Release coupler block and case drain. Estimated Installation Time: 3 hrs.	
7172554	Beacon Kit.....	\$ _____
	Estimated Installation Time: 1 hr.	
6989240	Canopy Enclosure Kit – Vinyl (M-Series only).....	\$ _____
	Estimated Installation Time: 1.5 hrs.	
7245618	Case Drain Kit – E45, E50, & E55.....	\$ _____
	For use with Flail Mower attachment. Estimated Installation Time: 1.5 hrs.	
7241392	Counterweight Add-On Kit (Tier 4 Only).....	\$ _____
	Required if converting a standard arm machine to long arm or Extendable arm. Can also be used to increase lift stability of standard, long or extendable arm. Shipping Weight –500 lbs. Estimated Installation Time: 1 hr.	
7202728	Deflector, Louver.....	\$ _____
	Provides additional protection of engine components and deflects air flow exiting below engine. Must also order Bolt PN 29CM1016 qty (4) and Installation Instructions PN 6990165. Estimated installation time for Extendable Arm: 4 hrs.	
7240592	Deluxe Display Panel Kit with Keyless Start.....	\$ _____
	Provides one owner code & eight user codes. Estimated Install Time: 1.0 hr.	
7246892	Depth Check Kit, Long Arm And Angle blade.....	\$ _____
	Excavator must be equipped with Deluxe Panel. Estimated Installation Time: 3 hrs.	
7246893	Depth Check Kit, Long Arm.....	\$ _____
	Excavator must be equipped with Deluxe Panel. Estimated Installation Time: 3 hrs.	
7246894	Depth Check Kit, Standard Arm and Angle Blade.....	\$ _____
	Excavator must be equipped with Deluxe Panel. Estimated Installation Time: 3 hrs.	
7246895	Depth Check Kit, Standard Arm.....	\$ _____
	Excavator must be equipped with Deluxe Panel. Estimated Installation Time: 3 hrs.	
7246898	Depth Check BLR2 Laser Mounting Kit.....	\$ _____
	Required if using BLR2 with Depth Check. Includes Magnetic Receiver Mount and Harness. (Referr to “Order From Sales” for BLR2)	
7237289	Engine Block Heater Kit.....	\$ _____
	Estimated Installation Time: 1 hr.	
6904762	Excavator Operator Safety DVD.....	\$ _____
	Includes both English and Spanish versions on one DVD	
6903186	Excavator Operator Training Kit.....	\$ _____
6900916	Excavator Service Safety Training Kit.....	\$ _____
7221751	Extendable Arm Kit.....	\$ _____
	If installing on standard arm, must also install Counterweight Add-On Kit PN 7241392. Estimated installation time for Extendable Arm: 4 hrs.	
7268309	Fire Extinguisher Kit.....	\$ _____
	Estimated Installation Time: 1 hrs.	
7311904	Guard Kit, Front.....	\$ _____
	Front guard (metal screen) attaches to cab or canopy to provide additional operator protection. Estimated Installation Time: 0.75 hr.	

Bobcat Compact Excavator

Part Number	Description	Dealer Installed Accessories - Order From Parts
--------------------	--------------------	--

To ensure having the correct Part Number for a Dealer Installed Accessory, obtain the excavator model and serial number and check with the Dealer Parts Department. For the most current Dealer Installed Accessories pricing, refer to BobQuote or Dealer Parts Department.

7173308	Guard Kit, Top (FOPS) Canopy.....	\$ _____
	Provides additional operator protection from falling objects. Estimated Installation Time: 0.5 hr.	
7173584	Guard Kit, Top (FOPS) Cab Kit.....	\$ _____
	Provides additional operator protection from falling objects. Estimated Installation Time: 0.5 hr.	
7230850	Grading Blade Accessory – Class 4.....	\$ _____
	24” Grading Blade accessory for use with Pro Clamp System. Estimated Installation Time: 0.25 hr.	
7185291	Hydraulic X-Change Kit.....	\$ _____
	Estimated Installation Time: 6 hrs.	
7221760	Hydraulic X-Change Kit – Extendable Arm (E55).....	\$ _____
	Estimated Installation Time: 6 hrs.	
7238484	Keyless Start Kit – For Standard Panel Machines.....	\$ _____
	Provides one Owner code and two User codes (five digit). Estimated Installation Time: 1.0 hr.	
6988434	Radio Kit – Cab only.....	\$ _____
	Must also order speaker & antenna kit PN 7228595 if not already installed. Estimated Installation Time: 1.0 hr.	
7228595	Speaker & Antenna Kit (Cab machine only).....	\$ _____
	Estimated Installation Time: 1.0 hr.	
7010428	3" Seat Belt.....	\$ _____
	Must also order installation instructions PN 6989413. Estimated Installation Time: 1.0 hrs.	
7265189	Secondary Auxiliary Kit	\$ _____
	Provides 12 GPM maximum flow. Shipping weight 52 lbs. Estimated Installation Time: 4 hrs.	
	Estimated Installation Time: 4 hrs.	
7172974	Strobe Light Kit.....	\$ _____
	Estimated Installation Time: 0.75 hr.	
7199213	Bolt-On Rubber Pad Kit – (E50, E60 R2-Series) (E45, E50, & E55 M-series) Only.....	\$ _____
	For use with steel tracks only. Includes 78 pads. Available only for S/N AG3G11113 & above (E45). Estimated Installation Time: 3 hrs.	
7205970	Travel Motion Alarm Kit.....	\$ _____
	Estimated Installation Time: 2 hrs.	
7241225	Work Lights Kit-Cab.....	\$ _____
	Additional front work lights (2), and rear work light (1). Mounts to front & rear cab pillars.	
	Estimated Installation Time: 2 hrs.	
7241226	Work Lights Kit- Canopy.....	\$ _____
	Additional front work lights (2), and rear work light (1). Mounts to front & rear cab pillars.	
	Estimated Installation Time: 2 hrs.	

Bobcat Compact Excavator



Standard Equipment

- | | |
|---|--|
| Auto-Idle | Dozer Blade with Float |
| Auto-Shift, 2-Speed Travel | Engine/Hydraulic Monitor with Shutdown |
| Auxiliary Hydraulics with Selectable Flow | Fingertip Auxiliary Hydraulic Control |
| - W/ Boom Mounted Flush Face Quick Couplers | Fingertip Boom Swing Control |
| Canopy | Horn |
| - Includes: Cup Holder, Retractable Seat Belt, | Hydraulic Joystick Controls |
| Suspension Seat with High Back | Rubber Tracks |
| - Roll Over Protective Structure (ROPS) – Meets | Spark Arrestor Exhaust System |
| Requirements of ISO 12117-2: 2008 | Turbocharged, Tier 4, Non DPF |
| - Tip Over Protective Structure (TOPS) – Meets | Telematics |
| Requirements of ISO 12117: 2000 | Vandalism Protection |
| Control Console Locks | Work Lights |
| Control Pattern Selector Valve (ISO/STD) | X- Change™ Attachment Mounting System |

Quick Specs

	<u>Std Arm</u>	<u>E55M</u> <u>Long Arm</u>	<u>Ext Arm</u>
Engine Model (Tier 4).....	-	D24	D24
Horsepower.....	-	49.8	49.8
Auxiliary Hydraulics Flow.....	-	20.0 GPM	20.0 GPM
Travel Speed (Maximum).....	-	3.1 MPH	3.1 MPH
Operating Weight*.....	-	12004 lbs.	12335 lbs.
Shipping Weight.....	-	11683 lbs.	12014 lbs.
Cab Height.....	-	99.7"	99.7"
Width.....	-	77.2"	77.2"
Length, Transport.....	-	207"	210"
Dig Depth.....	-	12' 11"	14' 7"
Reach at Ground Level.....	-	19' 11"	21' 7"
Dump Height.....	-	13' 7"	14' 6"
Arm Length.....	-	76.0"	67.6"-96.0"
Boom Swing (Left).....	-	75°	75°
Boom Swing (Right).....	-	50°	50°
Bucket Breakout Force.....	-	8977 lbf.	8977 lbf.
Arm Breakout Force.....	-	5751 lbf.	6342 lbf.
Tail Swing Overhang.....	-	13.4"	13.4"

*Operating Weight includes canopy, rubber tracks, applicable counterweight, standard bucket, fluids full and 165 lb. (75KG) operator.

Bobcat Compact Excavator

Part Number	Description	Compact Excavator
-------------	-------------	-------------------

M3221	E55 Compact Excavator	\$72,409
M32__-R51-C03	Telematics, Canada.....	\$0
M32__-R51-C02	Telematics, US.....	\$0

Part Number	Description	Comfort Cab Packages
-------------	-------------	----------------------

MUST EITHER SELECT A BASE CONFIGURATION WITH NO OPTIONS OR SELECT ONE COMFORT AND ONE PERFORMANCE PACKAGE OR SELECT ONE EXTENDABLE ARM PACKAGE, OR SELECT INDIVIDUAL OPTIONS

M32__-P07-C11	C11 Comfort Package..... Includes Open Canopy, Travel Motion Alarm, and Vinyl Suspension Seat.	\$310
M32__-P07-C21	C21 Comfort Package..... Includes Open Canopy, Deluxe Instrument Panel with Keyless Start, Travel Motion Alarm, and Vinyl Suspension Seat.	\$868
M32__-P07-C42	C42 Comfort Package..... Includes Enclosed Cab with HVAC, Cloth Suspension Seat, Travel Motion Alarm, and Radio	\$7,166
M32__-P07-C52	C52 Comfort Package..... Includes Enclosed Cab with HVAC, Deluxe Instrument Panel with Keyless Start, Cloth Suspension Seat, Travel Motion Alarm, and Radio	\$7,724

Part Number	Description	Performance Cab Packages
-------------	-------------	--------------------------

MUST EITHER SELECT A BASE CONFIGURATION WITH NO OPTIONS OR SELECT ONE COMFORT AND ONE PERFORMANCE PACKAGE OR SELECT ONE EXTENDABLE ARM PACKAGE, OR SELECT INDIVIDUAL OPTIONS

M3221-P06-P50	P50 Performance Package..... Includes Long Arm	\$0
M3221-P06-P60	P60 Performance Package..... Includes Long Arm and Clamp	\$2,648
M3221-P06-P63	P63 Performance Package..... Includes Long Arm, Clamp, Second Auxiliary Hydraulics, and Hydraulic X-Change	\$6,007
M3221-P06-P70	P70 Performance Package..... Includes Long Arm and Angle Blade	\$3,167
M3221-P06-P83	P83 Performance Package..... Includes Long Arm, Angle Blade, Clamp, Second Auxiliary Hydraulics, and Hydraulic X-Change	\$9,175

Part Number	Description	Extendable Arm Packages
-------------	-------------	-------------------------

MUST SELECT ONE EXTENABLE ARM PACKAGE CANNOT ADD COMFORT, PERFORMANCE, OR INDIVIDUAL OPTIONS

M3221-P08-E11	E11 Extendable Arm Package..... Includes Extendable Arm, Open Canopy, Travel Motion Alarm, and Vinyl Suspension Seat	\$7,040
M3221-P08-E25	E25 Extendable Arm Package..... Includes Extendable Arm, Open Canopy, Deluxe Instrument Panel with Keyless Start, Clamp, Hydraulic X-Change, Second Auxiliary Hydraulics, Angle Blade, Travel Motion Alarm, and Vinyl Suspension Seat	\$16,773
M3221-P08-E42	E42 Extendable Arm Package..... Includes Extendable Arm, Enclosed Cab with HVAC, Cloth Suspension Seat, Travel Motion Alarm, and Radio	\$14,459

Bobcat Compact Excavator

Part Number	Description	Extendable Arm Packages
-------------	-------------	-------------------------

M3221-P08-E56	E56 Extendable Arm Package.....	\$24,191
	Includes Extendable Arm, Enclosed Cab with HVAC, Deluxe Instrument Panel with Keyless Start, Cloth Suspension Seat, Clamp, Hydraulic X-Change, Second Auxiliary Hydraulics, Angle Blade, Travel Motion Alarm, and Radio	

Part Number	Description	Individual Factory Options
-------------	-------------	----------------------------

CANNOT ADD TO ANY ORDER WITH COMFORT AND PERFORMANCE PACKAGE SELECTIONS OR EXTENDABLE ARM PACKAGE

NOTE: Individual Options SLP includes a 20% premium when compared to ordering the option in a package

M3221-R03-C03	Arm Option - Extendable Arm w/ Heavy Counterweight (E55 only).....	\$8,076
	Increases operating weight by 730 lbs. Pro Clamp™ is not compatible with Extendable Arm.	
M3221-R12-C02	Hydraulic Angle Blade for E55.....	\$3,800
	Increases operating weight by 346 lbs.	
M32__-R06-C0_	Hydraulic X-Change.....	\$2,246
	Available for Standard Arm, Long Arm and Extendable Arm.	
M32__-R26-C02	Radio (Not available with canopy).....	\$520
M32__-R01-C03	Enclosed Cab with HVAC.....	\$8,383
	Includes Cloth Suspension Seat	
M32__-R14-C02	Deluxe Instrument Panel with Keyless Start for Canopy.....	\$670
M32__-R14-C04	Deluxe Instrument Panel with Keyless Start for Cab.....	\$670
M32__-R07-C0_	Second Auxiliary Hydraulics (12 GPM)	\$1,786
	Note: Second Auxiliaries are automatically included on Extendable Arm/Clamp optioned machines.	
M32__-R02-C02	Steel Tracks.....	\$3,508
	Increases operating weight by 77 lbs.	
M32__-R11-C02	Travel Motion Alarm.....	\$372

**NOTE: When adding a Clamp to an Extendable Arm Option, the Second Auxiliary Hydraulics option will automatically be added to the configuration. If adding field installed Clamp kit to an Extendable Arm machine, it is recommended that Second Auxiliary option be added to the machine. Pro Clamp™ is NOT compatible with Extendable Arm.

Part Number	Description	Dealer Installed Accessories - Order From Sales
-------------	-------------	---

7387821	Laser Receiver, CR700.....	\$474
	Can be used as handheld, machine, or re-mounted laser receiver. Includes magnetic mount for machines and clamp for rod mount.	
7160486	Laser Receiver, BLR2 (For use with Depth Check).....	\$2,099
	For use with Depth Check. Mounting Kit (7246898) must also be purchased from Parts. Estimated Installation Time: 0.25 hrs.	
7275232	Laser Transmitter Beacon, GL422N - (For use with Depth Check).....	\$2,679
	Dual Slope. Includes CR700 Receiver.	
6688806	Tripod for Laser Transmitter Beacon	\$268
	For use with GL422N laser transmitter.	
7185287	Long Arm Kit (E50).....	\$1,179
	Shipping Weight – 315 lbs. Estimated Installation Time: 3 hrs. (Counterweight required)	

Bobcat Compact Excavator

Part Number	Description
-------------	-------------

To ensure having the correct Part Number for a Dealer Installed Accessory, obtain the excavator model and serial number and check with the Dealer Parts Department. For the most current Dealer Installed Accessories pricing, refer to BobQuote or Dealer Parts Department.

7245108	Auxiliary Coupler Block Kit, Fixed arm - E50/E55..... \$ _____ Includes Push-to-Release coupler block and case drain. Estimated Installation Time: 3 hrs.
7245109	Auxiliary Coupler Block Kit, Ext. Arm – E55 Only..... \$ _____ Includes Push-to-Release coupler block and case drain. Estimated Installation Time: 3 hrs.
7172554	Beacon Kit..... \$ _____ Estimated Installation Time: 1 hr.
6989240	Canopy Enclosure Kit – Vinyl (M-Series only)..... \$ _____ Estimated Installation Time: 1.5 hrs.
7245618	Case Drain Kit – E45, E50, & E55..... \$ _____ For use with Flail Mower attachment. Estimated Installation Time: 1.5 hrs.
7241392	Counterweight Add-On Kit (Tier 4 Only)..... \$ _____ Required if converting a standard arm machine to long arm or Extendable arm. Can also be used to increase lift stability of standard, long or extendable arm. Shipping Weight –500 lbs. Estimated Installation Time: 1 hr.
7202728	Deflector, Louver..... \$ _____ Provides additional protection of engine components and deflects air flow exiting below engine. Must also order Bolt PN 29CM1016 qty (4) and Installation Instructions PN 6990165. Estimated installation time for Extendable Arm: 4 hrs.
7240592	Deluxe Display Panel Kit with Keyless Start..... \$ _____ Provides one owner code & eight user codes. Estimated Install Time: 1.0 hr.
7246892	Depth Check Kit, Long Arm And Angle blade..... \$ _____ Excavator must be equipped with Deluxe Panel. Estimated Installation Time: 3 hrs.
7246893	Depth Check Kit, Long Arm..... \$ _____ Excavator must be equipped with Deluxe Panel. Estimated Installation Time: 3 hrs.
7246894	Depth Check Kit, Standard Arm and Angle Blade..... \$ _____ Excavator must be equipped with Deluxe Panel. Estimated Installation Time: 3 hrs.
7246895	Depth Check Kit, Standard Arm..... \$ _____ Excavator must be equipped with Deluxe Panel. Estimated Installation Time: 3 hrs.
7246898	Depth Check BLR2 Laser Mounting Kit..... \$ _____ Required if using BLR2 with Depth Check. Includes Magnetic Receiver Mount and Harness. (Referr to “Order From Sales” for BLR2)
7237289	Engine Block Heater Kit..... \$ _____ Estimated Installation Time: 1 hr.
6904762	Excavator Operator Safety DVD..... \$ _____ Includes both English and Spanish versions on one DVD
6903186	Excavator Operator Training Kit..... \$ _____
6900916	Excavator Service Safety Training Kit..... \$ _____
7221751	Extendable Arm Kit..... \$ _____ If installing on standard arm, must also install Counterweight Add-On Kit PN 7241392. Estimated installation time for Extendable Arm: 4 hrs.
7268309	Fire Extinguisher Kit..... \$ _____ Estimated Installation Time: 1 hrs.
7311904	Guard Kit, Front..... \$ _____ Front guard (metal screen) attaches to cab or canopy to provide additional operator protection. Estimated Installation Time: 0.75 hr.

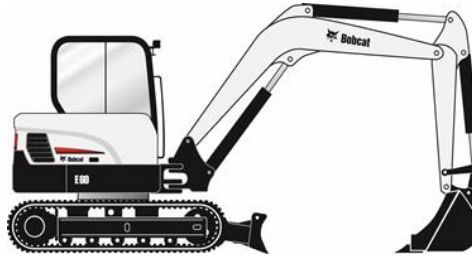
Bobcat Compact Excavator

Part Number	Description	Dealer Installed Accessories - Order From Parts
--------------------	--------------------	--

To ensure having the correct Part Number for a Dealer Installed Accessory, obtain the excavator model and serial number and check with the Dealer Parts Department. For the most current Dealer Installed Accessories pricing, refer to BobQuote or Dealer Parts Department.

7173308	Guard Kit, Top (FOPS) Canopy.....	\$ _____
	Provides additional operator protection from falling objects. Estimated Installation Time: 0.5 hr.	
7173584	Guard Kit, Top (FOPS) Cab Kit.....	\$ _____
	Provides additional operator protection from falling objects. Estimated Installation Time: 0.5 hr.	
7230850	Grading Blade Accessory – Class 4.....	\$ _____
	24" Grading Blade accessory for use with Pro Clamp System. Estimated Installation Time: 0.25 hr.	
7185291	Hydraulic X-Change Kit.....	\$ _____
	Estimated Installation Time: 6 hrs.	
7221760	Hydraulic X-Change Kit – Extendable Arm (E55).....	\$ _____
	Estimated Installation Time: 6 hrs.	
7238484	Keyless Start Kit – For Standard Panel Machines.....	\$ _____
	Provides one Owner code and two User codes (five digit). Estimated Installation Time: 1.0 hr.	
6988434	Radio Kit – Cab only.....	\$ _____
	Must also order speaker & antenna kit PN 7228595 if not already installed. Estimated Installation Time: 1.0 hr.	
7228595	Speaker & Antenna Kit (Cab machine only).....	\$ _____
	Estimated Installation Time: 1.0 hr.	
7010428	3" Seat Belt.....	\$ _____
	Must also order installation instructions PN 6989413. Estimated Installation Time: 1.0 hrs.	
7265189	Secondary Auxiliary Kit	\$ _____
	Provides 12 GPM maximum flow. Shipping weight 52 lbs. Estimated Installation Time: 4 hrs.	
	Estimated Installation Time: 4 hrs.	
7172974	Strobe Light Kit.....	\$ _____
	Estimated Installation Time: 0.75 hr.	
7199213	Bolt-On Rubber Pad Kit – (E50, E60 R2-Series) (E45, E50, & E55 M-series) Only.....	\$ _____
	For use with steel tracks only. Includes 78 pads. Available only for S/N AG3G11113 & above (E45). Estimated Installation Time: 3 hrs.	
7205970	Travel Motion Alarm Kit.....	\$ _____
	Estimated Installation Time: 2 hrs.	
7241225	Work Lights Kit-Cab.....	\$ _____
	Additional front work lights (2), and rear work light (1). Mounts to front & rear cab pillars.	
	Estimated Installation Time: 2 hrs.	
7241226	Work Lights Kit- Canopy.....	\$ _____
	Additional front work lights (2), and rear work light (1). Mounts to front & rear cab pillars.	
	Estimated Installation Time: 2 hrs.	

Bobcat Compact Excavator



Standard Equipment

- | | |
|---|---|
| <ul style="list-style-type: none"> Auto-Idle Auto-Shift, 2-Speed Travel Auxiliary Hydraulics with Selectable Flow <ul style="list-style-type: none"> - W/ Boom Mounted Flush Face Quick Couplers Boom Load Hold Valve Boom Swing Cab, Enclosed with HVAC - ROPS/TOPS <ul style="list-style-type: none"> - Includes: Cup Holder, Retractable Seat Belt, Deluxe Cloth Suspension Seat with High Back Control Console Locks Control Pattern Selector Valve (ISO/STD) Direct-to-Tank Valve Dozer Blade with Float | <ul style="list-style-type: none"> Engine/Hydraulic Monitor with Shutdown Fingertip Auxiliary Hydraulic Control Fingertip Boom Swing Control Horn Hydraulic Joystick Controls Mirrors, Left and Right Side Password Protection System Rubber Tracks Tier 4 Compliant, DPF/DOC Travel Motion Alarm Work Lights X- Change™ Attachment Mounting System |
|---|---|

Quick Specs

	<u>E63</u> <u>Std Arm</u>
Engine Model (Tier 4).....	4TNV98C
Horsepower.....	59.4
Rated Speed-RPM.....	2100
Auxiliary Hydraulics Flow.....	22.5 GPM
Travel Speed (Maximum).....	2.9 MPH
Operating Weight*.....	13,779 lbs.
Shipping Weight.....	13,419 lbs.
Cab Height.....	100.4"
Width.....	78.0"
Length, Transport.....	18' 8"
Dig Depth.....	13' 6"
Reach at Ground Level.....	20' 5"
Dump Height.....	14'
Arm Length.....	75"
Boom Swing (Left).....	70°
Boom Swing (Right).....	50°
Bucket Breakout Force.....	9,731 lbf.
Arm Breakout Force.....	5,767 lbf
Tail Swing Overhang.....	11.6"

*Operating Weight includes canopy, rubber tracks, applicable counterweight, standard bucket, fluids full and 165 lb. (75KG) operator.

Bobcat Compact Excavator

Part Number	Description	Compact Excavator
-------------	-------------	-------------------

M5563	E63 Compact Excavator.....	\$85,712
-------	----------------------------	----------

Part Number	Description	Factory Installed Options
-------------	-------------	---------------------------

M5563-R02-C02	Steel Tracks..... Increases operating weight by 265 lbs.	\$1,123
---------------	---	---------

Part Number	Description	Dealer Installed Accessories - Order From Sales
-------------	-------------	---

7387821	Laser Receiver, CR700..... Can be used as handheld, machine, or re-mounted laser receiver. Includes magnetic mount for machines and clamp for rod mount.	\$474
7275232	Laser Transmitter Beacon, GL422N - (For use with Depth Check)..... Dual Slope. Includes CR700 Receiver.	\$2,679
6688806	Tripod for Laser Transmitter Beacon For use with GL422N laser transmitter.	\$268

Part Number	Description	Dealer Installed Accessories - Order From Parts
-------------	-------------	---

7179686	Beacon Kit..... Estimated Installation Time: 0.5 hr.	\$ _____
6904762	Excavator Operator Safety DVD..... Includes both English and Spanish versions on one DVD	\$ _____
6903186	Excavator Operator Training Kit.....	\$ _____
6900916	Excavator Service Safety Training Kit.....	\$ _____
6988865	Radio Kit - AM/FM with Weather-band..... Must also order Radio Adaptor/Mounting Kit. Estimated Installation Time: 0.5 hr.	\$ _____
6988867	Radio Kit - AM/FM with Weather-band/iPod/Sirius..... Must also order Radio Adaptor/Mounting Kit. Estimated Installation Time: 0.5 hr.	\$ _____
6988869	Radio Kit - AM/FM with Weather-band/iPod/Sirius/CD player..... Must also order Radio Adaptor/Mounting Kit. Estimated Installation Time: 0.5 hr.	\$ _____
7244957	Radio Adaptor/Mounting kit for E63/E85..... Estimated Installation Time: 0.5 hr.	\$ _____
7244735	Second Auxiliary Hydraulics Kit..... Provides 9.2 GPM maximum flow. Estimated Installation Time: 6 hrs.	\$ _____
7010699	Seat Belt, 3" Kit..... Estimated Installation Time: 1 hr.	\$ _____
_____	Special Applications Kit (FOGS Level I – Front & Top Guard)..... Provides additional operator protection. Please refer to Bobcat Parts for specific component PN's and pricing.	\$ _____
7179688	Strobe Kit..... Estimated Installation Time: 0.5 hr.	\$ _____
7178233	Transfer Pump Kit (Used to transfer fuel)..... Estimated Installation Time: 1.75 hrs.	\$ _____